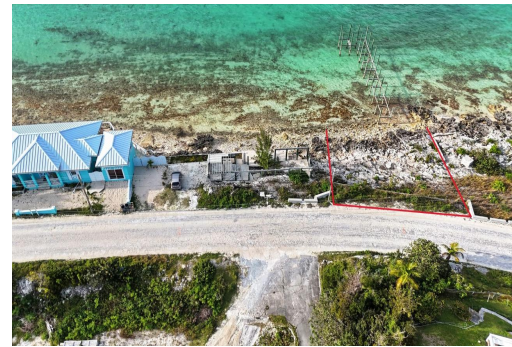
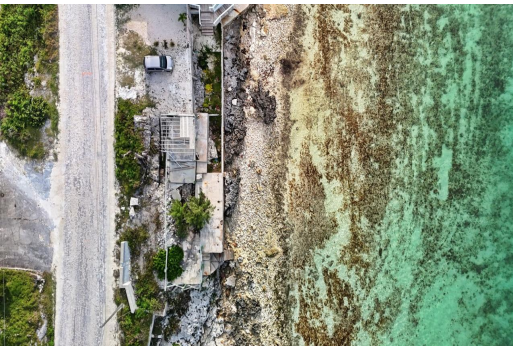


Lots/Acreage in Marsh Harbour



Lots/Acreage in Abaco

4,932 sf set amongst the tranquil neighborhood of Pelican Shores. This property overlooks the Sea of Abaco. Perched up to overlook the Harbour and the surrounding cays. Ideal property to build your cozy cottage with The Jibb Restaurant and Marina just steps away. You are moments away from all the amenities hardware stores, vets, doctors, airport, grocery stores, and fish markets. This is a unique property don't miss your opportunity to call a piece of paradise, your own....read more on our website.

Bedrooms: 0
Bathrooms: 0
Lot Size: 4932
Living Area: 4932
Subdivision: Marsh
Harbour
Features: None



James Sarles

Phone: (242) 351-9081

info@sarlesrealty.com



\$250,000 ID# 52020 [View Online](#)
www.sarlesrealty.com