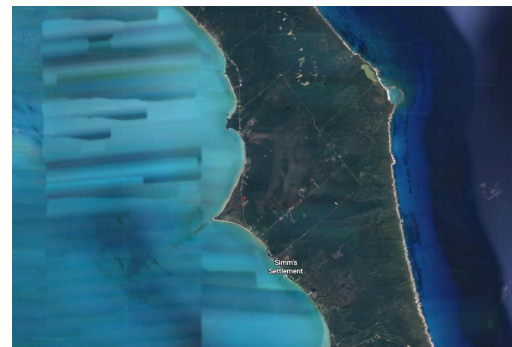
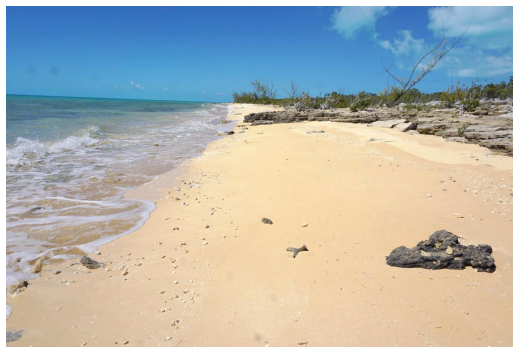
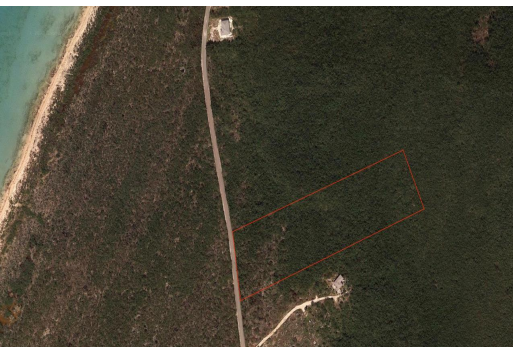


HILLTOP ACREAGE, Simms, Long Island



15.93 acres of hillside property with expansive views of the ocean and can be purchased with the 27...

15.93 acres of hillside property with expansive views of the ocean and can be purchased with the 27 acres of oceanfront property across the street (see MLS #48936), or separately. Within close proximity to two Long Island airports (Deadman's Cay and Stella Maris). This property is accessible from Queen's Highway and power is close by and can be pulled from the main road. Call today regarding this incredible investment opportunity!...read more on our website.

Bedrooms: 0
Bathrooms: 0
Lot Size: 693911
Subdivision: Simms
Features: Acreage,
Highway Access, Hillside,
None, Road - Paved,
View - Ocean

HILLTOP ACREAGE, Simms,
Long Island
Phone:



\$400.000 ID# 48938 [View Online](#)
www.sarlesrealty.com