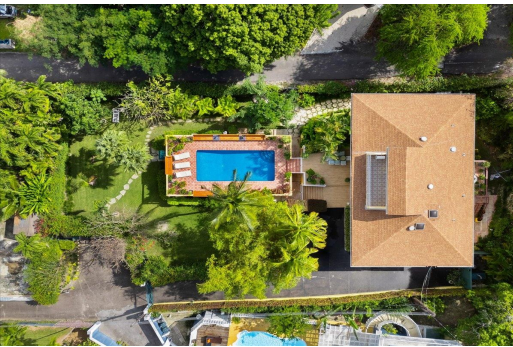


# Single Family Home in Eastern Road



## Single Family Home in New Providence/Paradise Island

Nestled on an 18,180 sq ft hilltop lot, this Eastern Road estate boasts 5,283 sq. ft. of living space spread over 3 levels. The ground floor comprised of a 2 bedroom 1 bath apartment which can be easily reincorporated as part of the main residence. A 1 bedroom 1 bath apartment is also located on the ground floor. A third 1 bedroom 1 bath garden view apartment is located off the main house. On the second level you will find principal and guest suites, an open plan living room, dining room and kitchen featuring top of the line appliances & a large island for entertaining. Just off the kitchen is a large balcony perfect for private dining which leads to the back garden area. Off the dining area there is a covered veranda offering ample seating, a built in bar, views of the pool and lush lan...read more on our website.

Bedrooms: 6  
Bathrooms: 6  
Lot Size: 18180  
Living Area: 5283  
Subdivision: Eastern Road  
Features: Additional Accom., Security System, Garden Area, Swimming Pool, Fully Fenced, Impact Windows, Impact Shutters, Roll Down Shutters, Cable, Stand-by Generator, Guest House, Furnished



James Sarles

Phone: (242) 351-9081  
info@sarlesrealty.com



**\$1.150,000 ID# 51403** [View Online](#)  
[www.sarlesrealty.com](http://www.sarlesrealty.com)