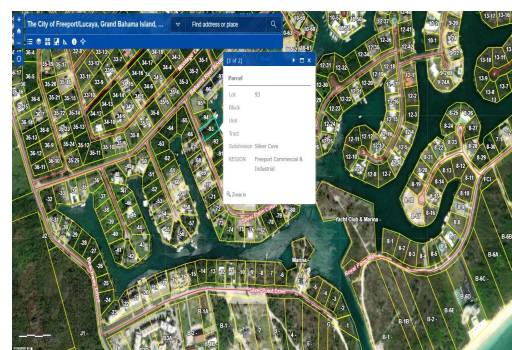
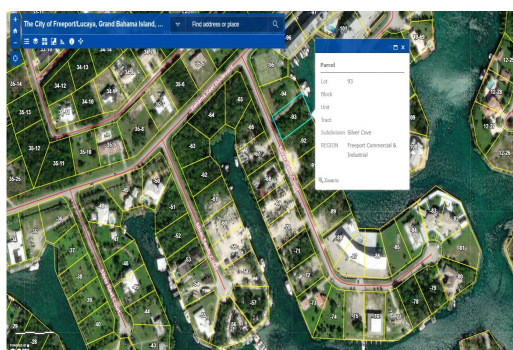


93 Silver Palm Street



Highest tourist commercial zoning!

Tourist commercial zoning, newly dredged inlet, seawall in good condition and central location close to the island's best amenities are just a few highlights this land has to offer. It has the best of both worlds- one can dock a sizable vessel and yet walk to the beach in 10 min or less. Two next door lots are available which could make for anything from a sizable estate to rental cottages or gated community of waterfront homes or apartment complexes or Bed and Breakfast type accommodations with a restaurant within the development- the income producing opportunities are endless! To top it all off, there is no property tax and land service fee which normally minimal is also prepaid until 2065. Don't miss this opportunity!...read more on our website.

Lot Size: 17,500 sq ft
Maint. Fees: 0
Subdivision: Silver Cove
100' Water canal front
Highest zoning- tourist commercial



Ina Simmons

Phone: (242)351-9081
inasimmons@gmail.com



\$125,000 ID# 51077 [View Online](#)
www.sarlesrealty.com

Ph: (242) 351-9081 | Web: www.sarlesrealty.com