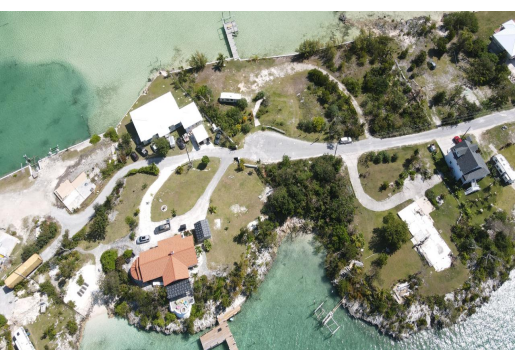


Lots/Acreage in Marsh Harbour



Lots/Acreage in Abaco

This 8,000 square foot lot in Pelican Shores, an upscale neighborhood in Marsh Harbour offers the perfect canvas for your island getaway or dream home. It combines the convenience of Marsh Harbour's amenities with the tranquil charm of an out-island setting. With captivating waterfront views, the property provides an opportunity to have your private dock right at your doorstep, opening up a world of recreational possibilities. This unique location promises an exceptional lifestyle of waterfront living in The Bahamas. Don't miss the chance to make this your piece of paradise....read more on our website.

Bedrooms: 0
Bathrooms: 0
Lot Size: 8000
Living Area: 8000
Subdivision: Marsh Harbour
Features: None



James Sarles

Phone: (242) 351-9081

info@sarlesrealty.com



\$265,000 ID# 50538 [View Online](#)
www.sarlesrealty.com