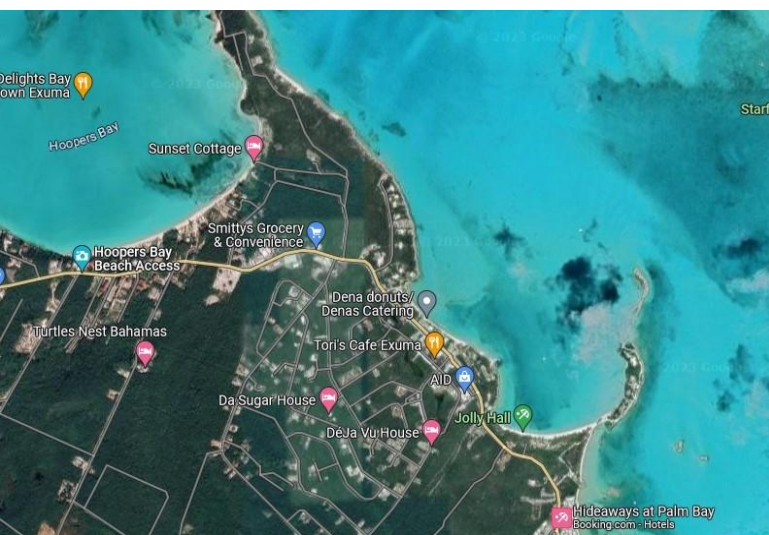


# Lots/Acreage in Hooper's Bay



## Lots/Acreage in Exuma & Exuma Cays

This elevated Lot of 43,560 sq ft offers the complete escape to peace and quiet. The breathtaking views, spectacular sunrises and sunsets, and the fresh sea breeze make this lot a paradise for relaxation surrounded by a wealth of natural beauty with deeded beach access. This Lot is nestled in one of the most desirable residential spots in Hooper's Bay just 4 miles west of George Town. The tall palm trees, and its deep blue waters, the brilliant stars, and the sunsets bring out the vibrancy and tranquility of this amazing location with elevations up to 40 feet. The sandy white beaches and sandbars are unrivalled natural formations that make this Lot a unique spot and a sought-after investment....read more on our website.

Bedrooms: 0  
Bathrooms: 0  
Lot Size: 43710  
Living Area: 43710  
Subdivision: Hooper's Bay  
Features: None



James Sarles

Phone: (242) 351-9081

info@sarlesrealty.com



**\$600,000 ID# 50216** [View Online](#)  
[www.sarlesrealty.com](http://www.sarlesrealty.com)