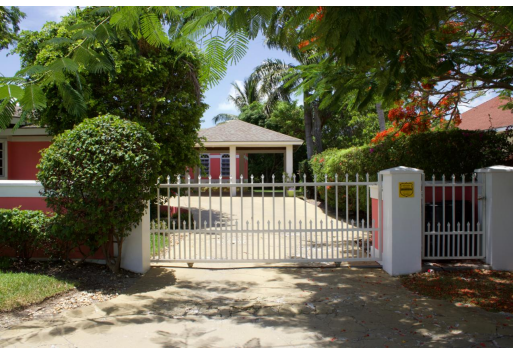


# Single Family Home in Camperdown



## Single Family Home in New Providence/Paradise Island

Discover this stunning home on a spacious 16,185 sqft lot nestled in the Winton Heights community. This beautifully designed 6 bed 4.5 bath residence spans approx 4,100 sqft and is perfect for a growing family. Enjoy the comfort of a modern kitchen boasting stainless-steel appliances, customized solid wood cabinetry with corian countertops, complemented by a cooking island and cozy breakfast nook. The well-designed master suite with a walk-in closet features an en-suite bathroom with a dual sink countertop, jacuzzi tub, and separate shower stall. Additional features include, elegant timber tray ceilings, recessed lighting, a formal dining room, living room, family room, laundry room, pantry, and office. This property offers the perfect oasis. Take advantage of the fully enclosed yard with ...read more on our website.

Bedrooms: 6  
Bathrooms: 4  
Lot Size: 16185  
Living Area: 4133  
Subdivision: Camperdown  
Features: Swimming Pool,  
Jetted Bathtub, Fully  
Fenced, Fully Walled,  
Stand-by Generator,  
Appliances Only



James Sarles

Phone: (242) 351-9081  
info@sarlesrealty.com



**\$645,000 ID# 50172** [View Online](#)  
[www.sarlesrealty.com](http://www.sarlesrealty.com)