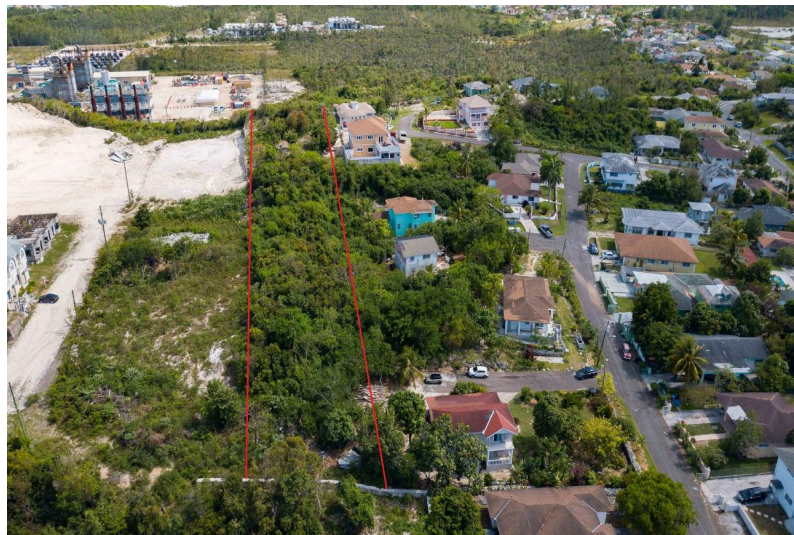
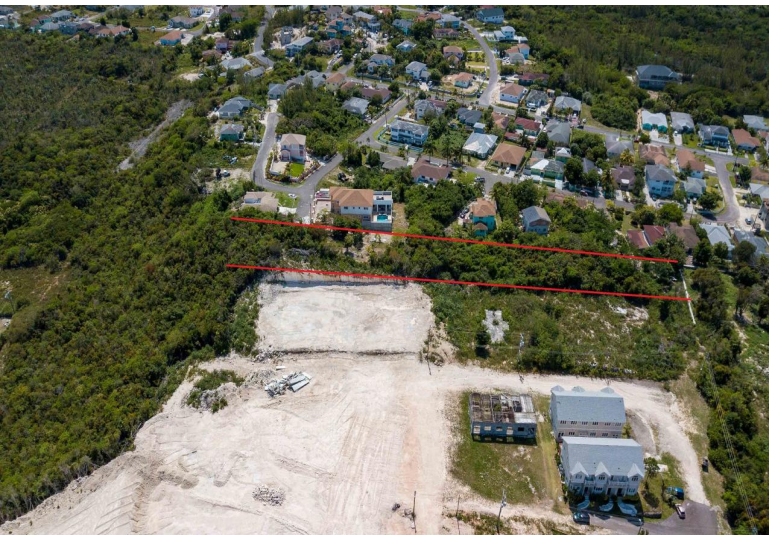


Lots/Acreage in Baillou Hill Estates



Lots/Acreage in New Providence/Paradise Island

Demand has increased and supplies are low for multifamily lots in New Providence. This development not only offers open zoned virgin land, ready for development; it is hilltop, with panoramic views of New Providence, away from the fear of floods and perched in a location where a new gated community can be envisioned. The possibilities are limitless. The location is prime, centrally located, yet remote. This 2.17 acres plot is suitable for many uses or can be developed as a Subdivision with condos and single family homes that would sell like hot cake at reasonable prices. What are you waiting for? Now is the time to make your dream and the Bahamian dream reality....read more on our website.

Bedrooms: 0
Bathrooms: 0
Lot Size: 94525
Living Area: 94525
Subdivision: Baillou Hill
Estates
Features: None



James Sarles

Phone: (242) 351-9081

info@sarlesrealty.com



\$1.250,000 ID# 49613 [View Online](#)
www.sarlesrealty.com