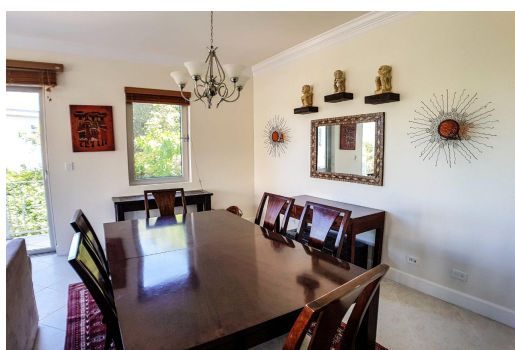


# Condo in Love Beach



## Condo in New Providence/Paradise Island

A larger-than-normal apartment is located at Love Beach with three bedrooms, three bathrooms and a powder room. From the front door, one enters a spacious entrance hall that leads directly to the bright open-plan living and dining area that is perfect for entertaining guests. The generously sized kitchen has a breakfast bar, granite countertops, and stainless steel appliances. All bedrooms have en-suite bathrooms. The primary suite is located on the main floor and has a large en-suite with a separate soaking tub and shower, double sink, and separate vanity along with a spacious walk-in closet. There is then a staircase that leads upstairs to the second and third bedrooms along with the laundry cupboard. This approximately 2,400-square-foot condo features 10-foot ceilings and 8-foot solid w...read more on our website.

Bedrooms: 3  
Bathrooms: 3  
Lot Size: 174240  
Living Area: 2400  
Subdivision: Love Beach  
Features: Main Level  
Entry, Fully Fenced,  
Impact Windows, 24 Hour  
Security, Furnished



James Sarles

Phone: (242) 351-9081  
info@sarlesrealty.com



**\$699,950 ID# 48693** [View Online](#)  
[www.sarlesrealty.com](http://www.sarlesrealty.com)