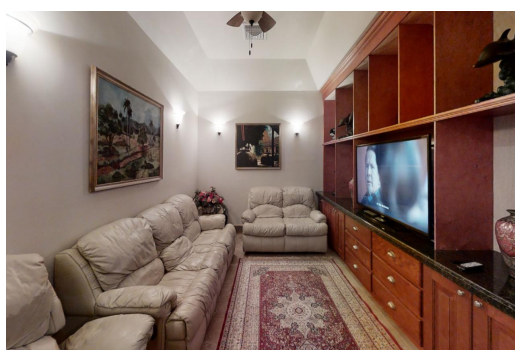
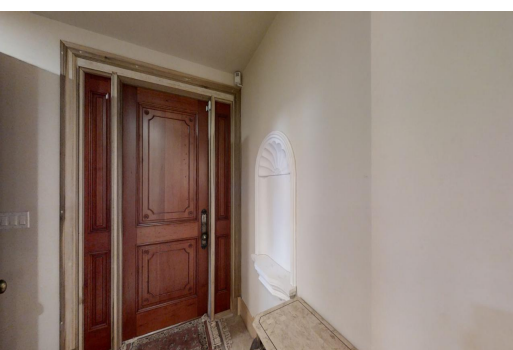


Single Family Home in Westridge



Single Family Home in New Providence/Paradise Island

This special residence sits on a large 1.039 acre landscaped lot in North Westridge. Tastefully designed and large palladium windows and dormers on the second floor, rooms are spacious with 10 feet ceilings and 8 feet doors. An elegant foyer leads to an impressive living room with built-in bookshelves and cupboards. Downstairs, there are 2 comfortable bedrooms and bathrooms, a powder room and a spacious kitchen, dining/room with top-of-the-line stainless steel appliances and gas oven range, rich wood cabinets and black granite countertops. There is a massive master suite with lots of windows and a large limestone master bath with tub and shower. Additional features include porcelain and limestone floors, baseboards and crown mouldings, recessed lighting and central air-conditioning. This e...read more on our website.

Bedrooms: 3
Bathrooms: 3
Lot Size: 45278
Living Area: 3362
Subdivision: Westridge
Features: Garden Area,
Fully Fenced, Fully
Walled, Furnished



James Sarles

Phone: (242) 351-9081
info@sarlesrealty.com



\$1.250,000 ID# 48687 [View Online](#)
www.sarlesrealty.com