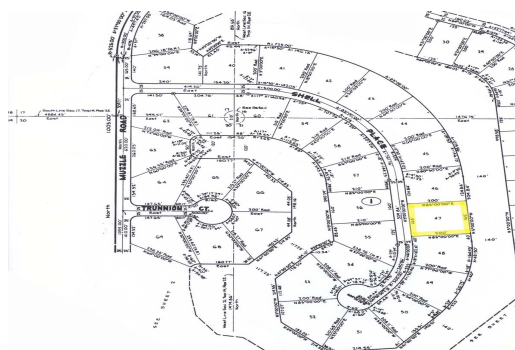
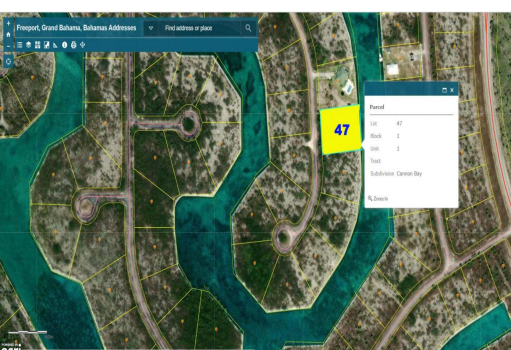
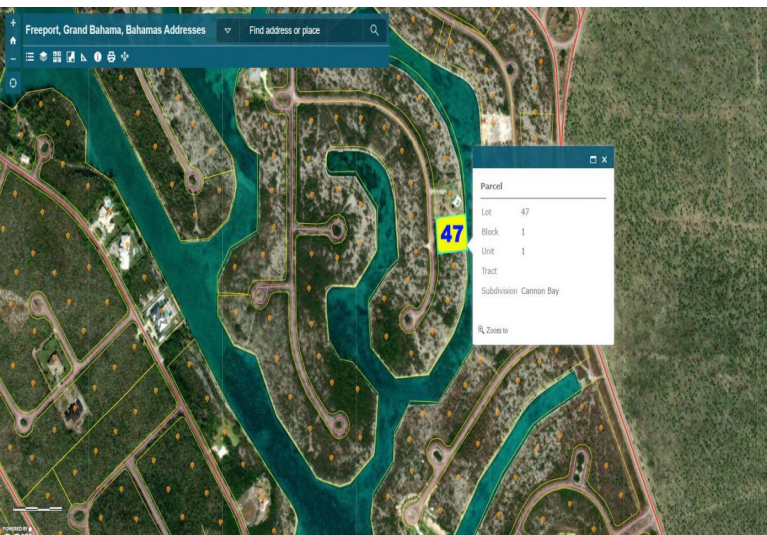


Cannon Bay Multifamily Land



Located in Cannon Bay Subdivision just off of the Grand Lucayan Waterway this waterfront property boasts 165' of Canal frontage. This piece of property is situated in an area zoned for multifamily high rise. This area is very quiet and the perfect spot for someone with a boat. Measured a little under an acre this lot presents an excellent opportunity for anyone wishing to build anything from a high-end single-family home to a multi-unit dwelling....read more on our website.

Lot Size: 33,000 sq ft
Maint. Fees: -
Subdivision: Cannon Bay
Features: Canal Front
165' Canal frontage



Denise Smith

Phone: 242-351-9081

denisevsmith08@gmail.com



\$183,000 ID# 48081 [View Online](#)
www.sarlesrealty.com

Ph: (242) 351-9081 | Web: www.sarlesrealty.com