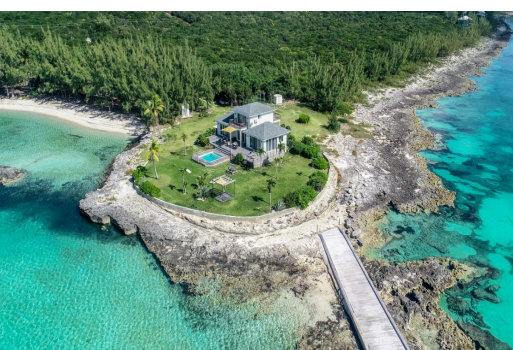
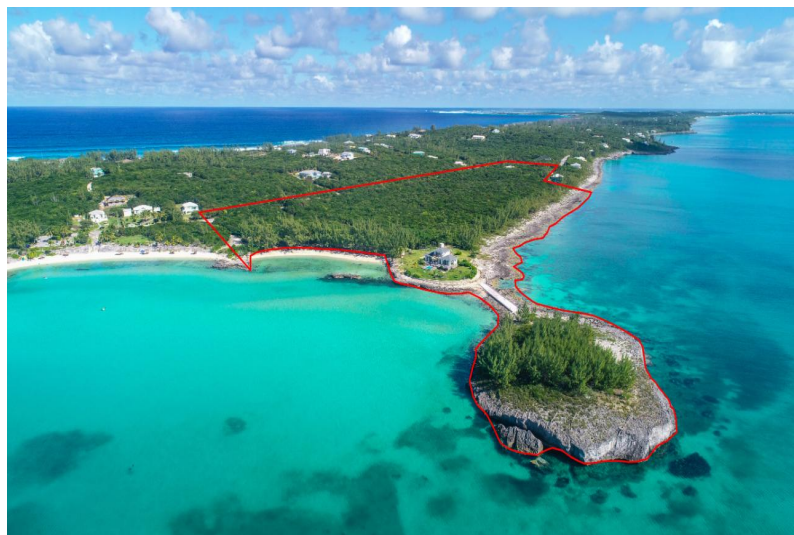


Lots/Acreage in Rainbow Bay



Lots/Acreage in Eleuthera

Rainbow Cay Development Site presents a one-of-a-kind opportunity for discerning buyers, with multiple possibilities for development and uncompromised privacy. This exclusive offering is one of the few true legacy land parcels remaining along Queens Highway, offering an idealistic combination of 1,000+ ft of rocky shore ocean frontage and 290+ ft of exceptional private sandy beach totaling over 20 acres beautifully situated with cascading views over the infamous Bahamian blue waters. Sayle Point House, the hidden jewel located in the heart of the property features a ~2,000 sq.ft. home with 3 beds, 3 baths, and provides ocean views from nearly every room in the house. Currently producing six figures in gross rental revenue, and consistently staying booked; this home could easily convert int...read more on our website.

Bedrooms: 3
Bathrooms: 3
Lot Size: 871200
Living Area: 2000
Subdivision: Rainbow Bay
Features: Garden Area,
Swimming Pool,
Furnished



James Sarles

Phone: (242) 351-9081

info@sarlesrealty.com



\$4.950,000 ID# 47972 [View Online](#)
www.sarlesrealty.com