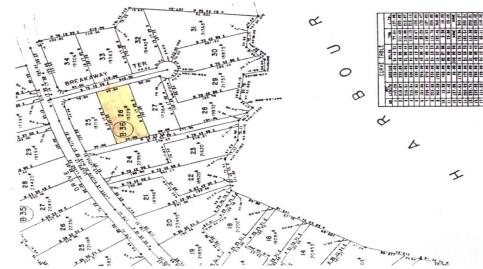
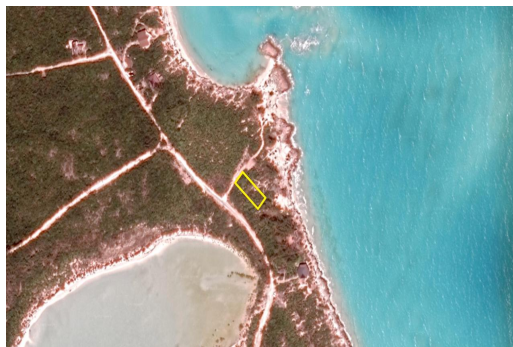
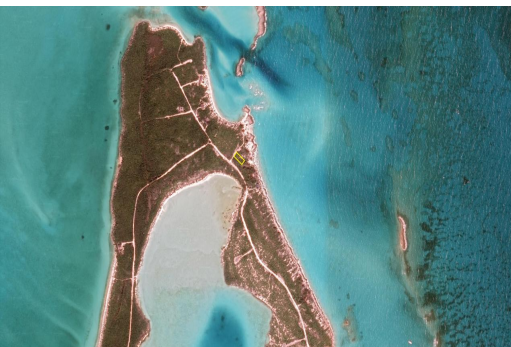


# Lots/Acreage in Exuma Cays



## Lots/Acreage in Exuma & Exuma Cays

Norman's Cay is a place of natural unspoiled beauty with crystal clear waters for snorkeling, diving and fishing. There is an excellent protected harbour with Norman's Pond, sheltered anchorage, great elevation, private airstrip, the popular restaurant known as MacDuff's, nearby. Other facilities are conveniently located 5 miles from Highborne's cay for items like groceries, fuel, etc. Norman's Cay is nestled in the most northern chain of the Exuma islands, 45 miles southeast of Nassau. It is a Perfect serenity to build your dream home!...read more on our website.

Bedrooms: 0  
Bathrooms: 0  
Lot Size: 18329  
Living Area: 0  
Subdivision: Exuma Cays  
Features: None



James Sarles

Phone: (242) 351-9081

info@sarlesrealty.com



**\$210,000 ID# 47649** [View Online](#)  
[www.sarlesrealty.com](http://www.sarlesrealty.com)