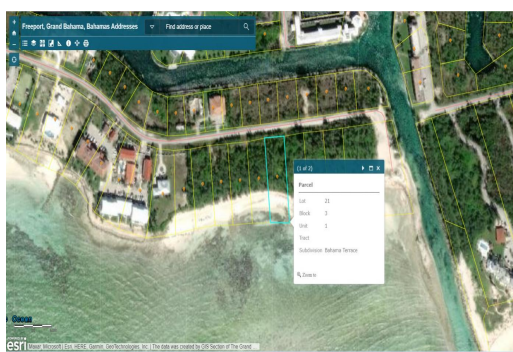


# 21 Port of Call - Beach Land



## Water Front Commercial Land

This is a great opportunity to own a waterfront commercial lot in an excellent location. Located in the Bahama Terrace area, this beachfront commercial lot is ideal with private access to the ocean. Zoned tourist commercial you can build a high rise hotel, restaurant, condominium complex or a single family home. Boasting 100' of Ocean frontage and 30,000 square feet. Give us a call, let us arrange a viewing today....read more on our website.

Lot Size: 30,000 sq ft  
Maint. Fees: -  
Subdivision: Bahama Terrace  
Features: Beach access,  
Ocean front



James Sarles

Phone: (242) 351-9081  
jamesarlesrealty@gmail.com



**\$389,000 ID# 46673** [View Online](#)  
[www.sarlesrealty.com](http://www.sarlesrealty.com)