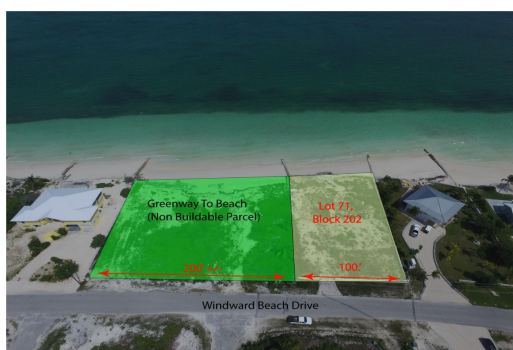


# Lots/Acreage in Treasure Cay



## Lots/Acreage in Abaco

Windward Palms® boasts the highest elevated and cleared beachfront lot located on inviting Windward Beach. It offers 105'™ of pristine, sandy white beach frontage on a 16,900 s/f parcel. This choice residential parcel features a south easterly exposure and enjoys breath-taking sunrises over the Sea of Abaco. The property includes a concrete wall on all four sides, plus an iron entrance gate. All utilities, including water, electricity, telephone, cable TV, high speed internet and garbage collection are available at the property road boundary. Adjacent to this property on one side is a 200'™ wide, non-buildable beach access parcel, which creates a comfortable boundary between neighbours. The residential resort community of Treasure Cay is located less than 1 hour from South Florida o...read more on our website.

Bedrooms: 0  
Bathrooms: 0  
Lot Size: 16900  
Living Area: 0  
Subdivision: Treasure Cay  
Features: Fully Walled



James Sarles

Phone: (242) 351-9081  
info@sarlesrealty.com



**\$599,000 ID# 46623** [View Online](#)  
[www.sarlesrealty.com](http://www.sarlesrealty.com)