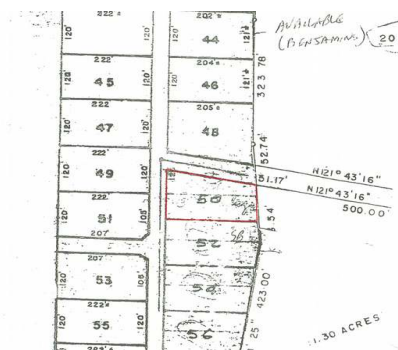
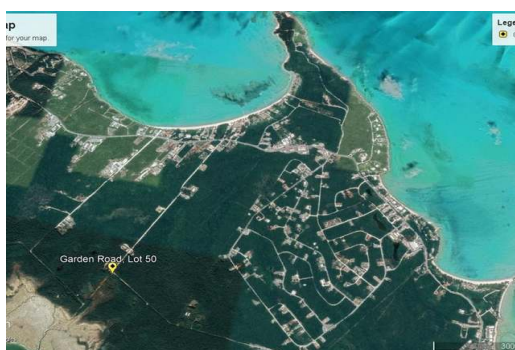


Lots/Acreage in Hooper's Bay



Lots/Acreage in Exuma & Exuma Cays

A vacant residential corner lot on Garden Road opposite the Tropical Gardens complex. Electricity is available to the lot, water can be supplied by drilling a well and/or a rainwater catchment. Approximately 3/4 mile to the Queens Highway, 6 miles to George Town and Victoria Lake; 7 miles to the International airport and 11 miles to the Sandals at Emerald Bay Resort. Nearby business include: Prime Island Meats, Smitty's Grocery Store and Pharmacy, CNK Liquor Store, Auto Extreme (auto repair) and Bahamas Power and Light....read more on our website.

Bedrooms: 0
Bathrooms: 0
Lot Size: 24600
Living Area: 0
Subdivision: Hooper's Bay
Features: None



James Sarles

Phone: (242) 351-9081
info@sarlesrealty.com



\$24,500 ID# 46250 [View Online](#)
www.sarlesrealty.com