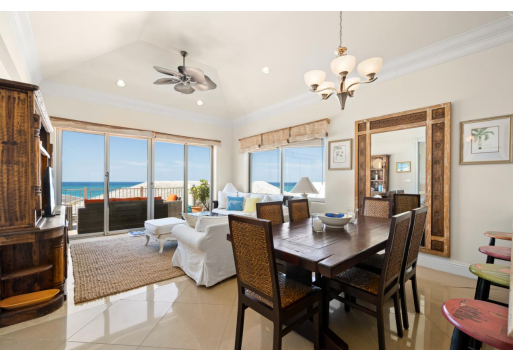


Condo in Love Beach



Condo in New Providence/Paradise Island

Situated in the heart of Love Beach, this transitional 3 bed, 2 bath penthouse is perfectly located within the gated community of Columbus Cove on the coveted Western end of New Providence. Nestled in the quiet eastern corner of the property the unit boasts uninterrupted elevated ocean views with spacious balconies. Featuring 1725 sq ft of combined indoor/outdoor space, it is available fully furnished equipped with stainless steel appliances, wooden cabinetry, granite countertops, central AC and a washer/dryer. The open plan design is the ideal place to enjoy comfortable island living! This unit comes with allocated parking spaces, 24 hour security, access to two swimming pools, a gym and is footsteps away from one of the best beaches on the island....read more on our website.

Bedrooms: 3
Bathrooms: 2
Lot Size: 0
Living Area: 1725
Subdivision: Love Beach
Features: Swimming Pool,
24 Hour Security,
Hurricane Windows



James Sarles

Phone: (242) 351-9081
info@sarlesrealty.com



\$720,000 ID# 46068 [View Online](#)
www.sarlesrealty.com