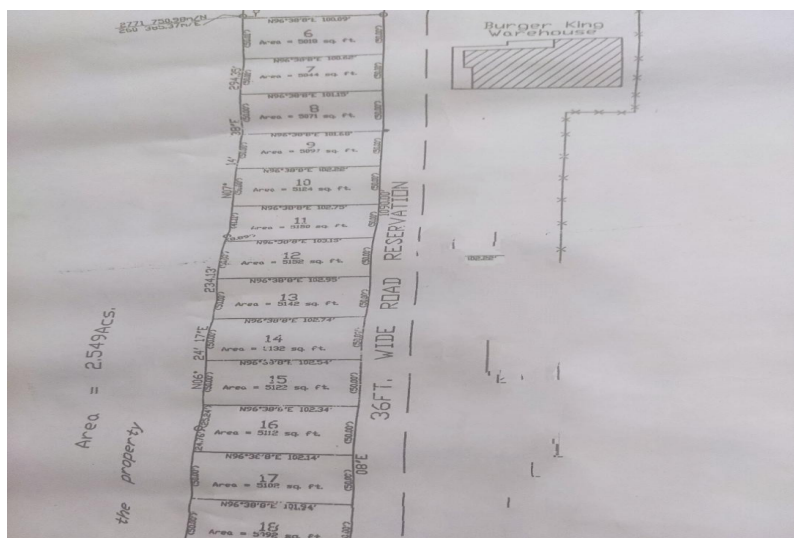


Lots/Acreage in Harold Road



Lots/Acreage in New Providence/Paradise Island

Captivating & Impeccable Harold Road lot near Burger King! 3.5 acres are available for residential or commercial use! This property is next to churches, schools, restaurants, gas stations and numerous business on Harold Road. Call us today!...read more on our website.

Bedrooms: 0
Bathrooms: 0
Lot Size: 152460
Living Area: 40000
Subdivision: Harold Road
Features: Cable



James Sarles

Phone: (242) 351-9081
info@sarlesrealty.com



\$1.600,000 ID# 45779 [View Online](#)
www.sarlesrealty.com