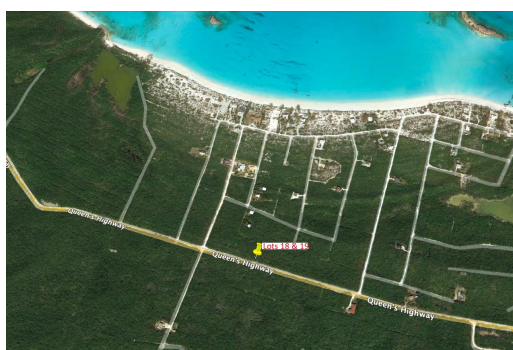
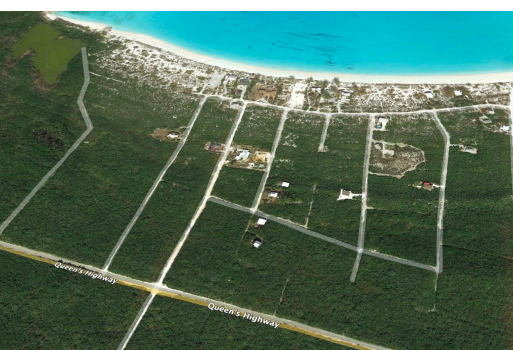
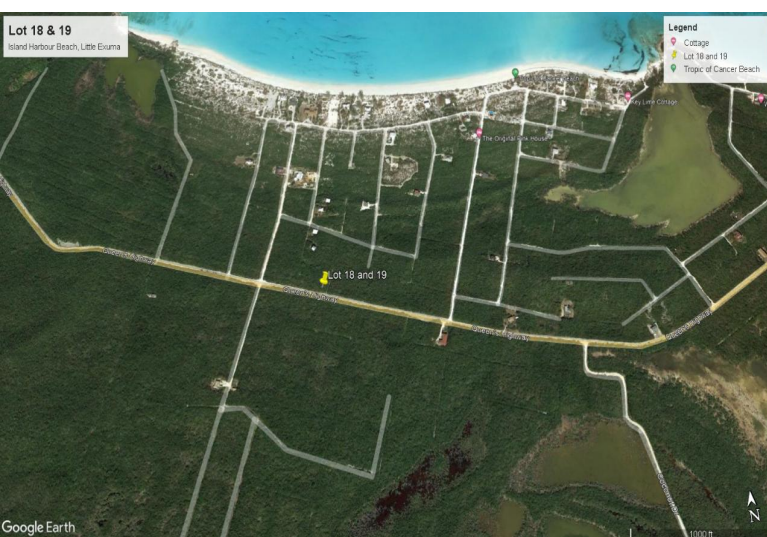


Lots/Acreage in Island Harbour Beach



Lots/Acreage in Exuma & Exuma Cays

Two contiguous lots on the main public highway in Little Exuma. With nearly 200 feet of street frontage these lots are ideal for commercial or residential development. Little Exuma is one of the best kept secrets of the Bahamas and the Property is seconds away from the world famous Tropic of Cancer Beach. Little Exuma is a short drive to George Town where shops, restaurants and grocery stores are in abundance. Excellent piece for your Peace of Paradise....read more on our website.

Bedrooms: 0
Bathrooms: 0
Lot Size: 11000
Living Area: 0
Subdivision: Island
Harbour Beach
Features: None



James Sarles

Phone: (242) 351-9081

info@sarlesrealty.com



\$38,000 ID# 45659 [View Online](#)
www.sarlesrealty.com