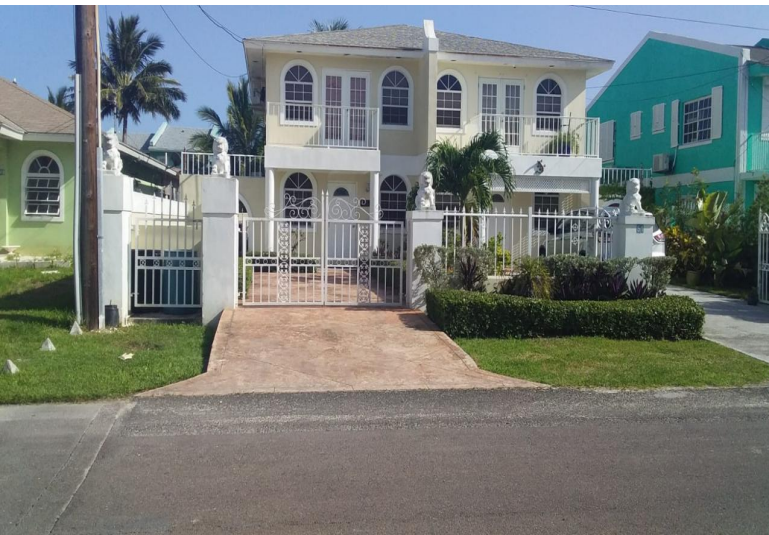


Half Duplex in West Bay Street



Half Duplex in New Providence/Paradise Island

Well maintained 2 bed, 2 bath townhome in the western district of New Providence. Offering secure gated entry, tasteful furnishings throughout, granite counter tops, stainless steel appliances including washer and dryer and ample kitchen storage. This unit has a spacious master bedroom with an ensuite bathroom outfitted with a relaxing jetted tub, open living and dining area with a cozy breakfast nook. The complex has a large pool with enclosed yard, landscaped and a standby generator....read more on our website.

Bedrooms: 2
Bathrooms: 2
Lot Size: 1200
Living Area: 1200
Subdivision: West Bay Street
Features: Garden Area, Swimming Pool, Stand-by Generator, Furnished



James Sarles

Phone: (242) 351-9081
info@sarlesrealty.com



\$2,500 () ID# 44044 [View Online](#)
www.sarlesrealty.com