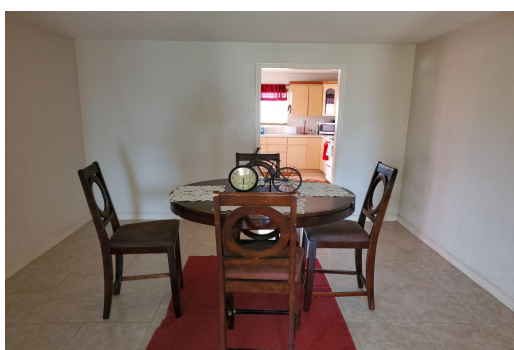


Affordable Single Family Home In Grasmere



Great Starter Home In Grasmere!!

This is a great starter home that sits on a cul-de-sac with a large size lot that's a little over half an acre, there is much room for expansion. This home is within 7 minutes drive to Taino Beach, 10 minutes to Port Lucaya and 12 minutes to downtown. The home is ready to move in and make it your own. Call for viewings!...read more on our website.

Bedrooms: 3
Bathrooms: 2.5
Lot Size: 23522
Maint. Fees: \$61.68 plus
VAT 12% \$7.40
Subdivision: Grasmere
Features: Unfurnished



Tiffany Smith

Phone: (242) 351-9081

kekris4@gmail.com



\$175,000 ID# 43144 [View Online](#)
www.sarlesrealty.com