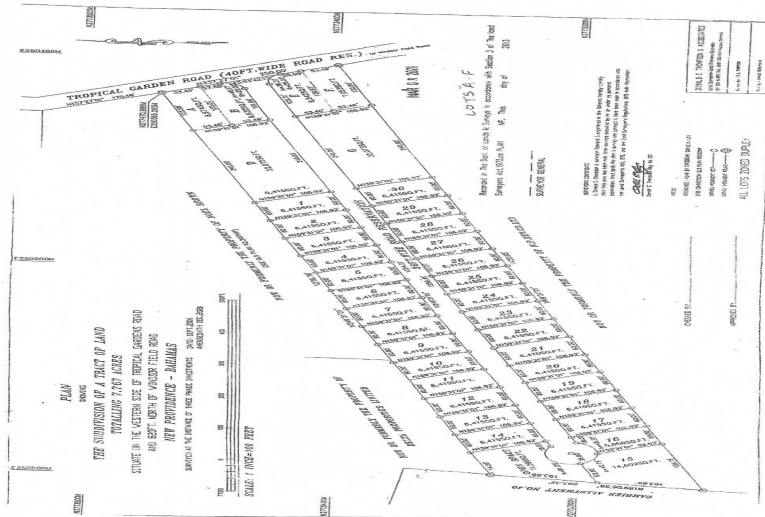
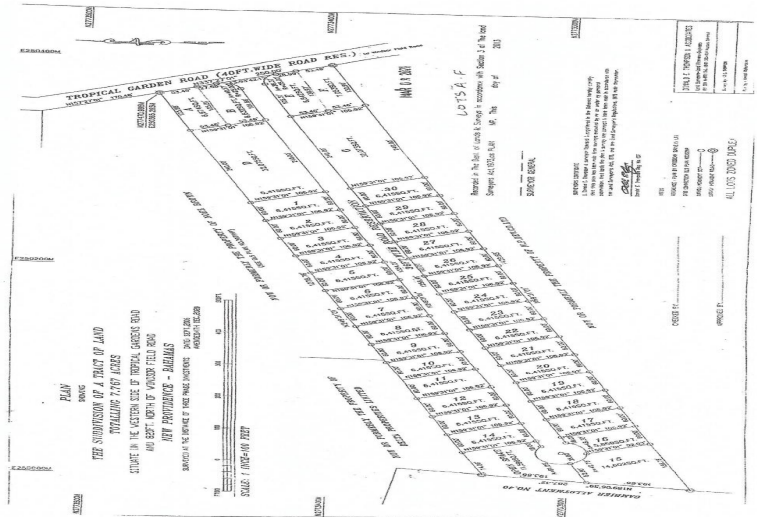


TROPICAL GARDENS, West Bay Street, New Providence/Paradise



A14,602 Sq. Ft. Lot zoned for a maximum of 6 units. Don't miss out on this opportunity to build...

A14,602 Sq. Ft. Lot zoned for a maximum of 6 units. Don't miss out on this opportunity to build your Dream Home or multi unit apartment building on this prime income producing property in a highly sought after area. The Assessment Number for the conveyance is available for the lot....read more on our website.

Bedrooms: 0
 Bathrooms: 0
 Lot Size: 14602
 Subdivision: West Bay Street, New Providence/Paradise Street, Island
 Features: None
 Phone:



\$260,000 ID# M55210 View Online
www.sarlesrealty.com