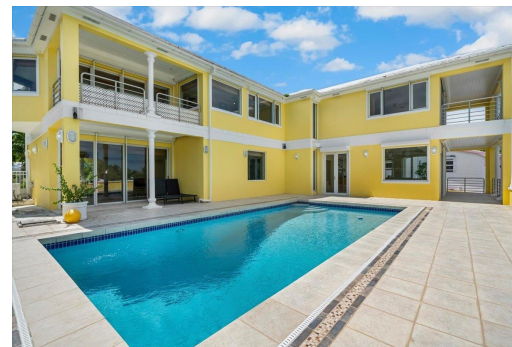


HOUSE EASTERN ROAD, Eastern Road, New Providence/Par



Creek House is set on almost an acre of land with over 100â€™™ on Fox Hill Creek. The combination of...

Creek House is set on almost an acre of land with over 100â€™™ on Fox Hill Creek. The combination of dockage and ocean views is a rare find. With 6246 sq ft of living space, large canal side gazebo with bathrooms and shower, this home is ideal for entertaining. Large spacious rooms certainly lend themselves to comfortable living. Special features include elevated pool, 2 car garage, dock house, generator, impact windows, roll down shutters, landscaping filled with native fruit trees, enclosed garden, security lighting and rainwater tank....read more on our website.

Bedrooms: 6
Bathrooms: 6
Lot Size: 41666
Subdivision: Eastern Road
Features: Cable, Canal Front, Central location, Dock, Easy Access, Fully Fenced, Fully Walled, Furnished, Garden Area, Hurricane Windows, Impact Shutters, Impact Windows, Jetted Bathtub, Kitchen Built-in(s), Landscaped, Level Lot, Main Level Entry, Marina Nearby, Pets Allowed, Phone to Lot, Private Setting, Quiet Area, Road - Paved, Roll Down Shutters, Security System, Shopping Nearby, Stand-by Generator, Swimming

HOUSE EASTERN ROAD, Eastern

Pool, Treed Lot,
Underground Services,
View - Ocean, Waterfront
- Ocean, Wkshop in
House

Providence/Par

CREEK HOUSE EASTERN
ROAD, Eastern Road, New
Providence/Paradise Island
Phone:



\$3,499,999 ID# M54912 [View Online](#)
www.sarlesrealty.com