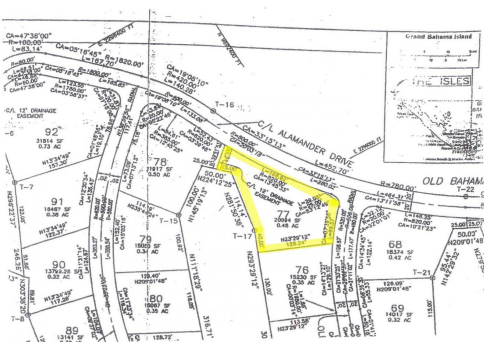


Old Bahama Bay Land

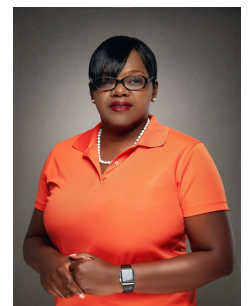


Canal Lot in Old Bahama Bay

The 150 acres that make up Old Bahama Bay have been designed to include everything you want in a tropical paradise. There are many outstanding features that make Old Bahama Bay an ideal choice for your second residence or vacation home. If you're a yacht owner, you'll truly appreciate that every home site has its own private dock. This lot is measured at a little over a quarter of an acre and offers 115 feet of ocean with dockage along a private 8 foot deep canal.

Enjoy all of the amenities of a high end resort and the convenience of the private air strip. Old Bahama Bay is well managed and well maintained by very efficient onsite property managers....read more on our website.

Lot Size: 20,994 sq ft
Maint. Fees: 1,083
quarterly
Subdivision: West End /
West Grand Bahama
Features: Canal Front,
Gated



Shelly Gardiner

Phone: (242)351-9081
gardinersshelly@gmail.com



\$175,000 ID# 40942 [View Online](#)
www.sarlesrealty.com