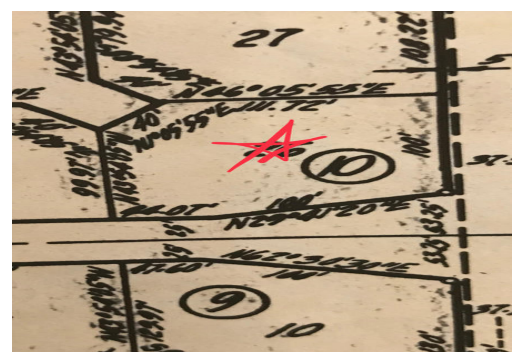
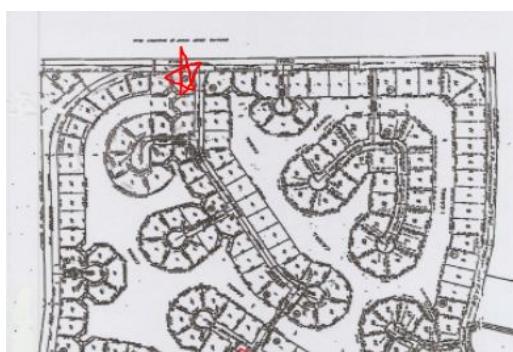
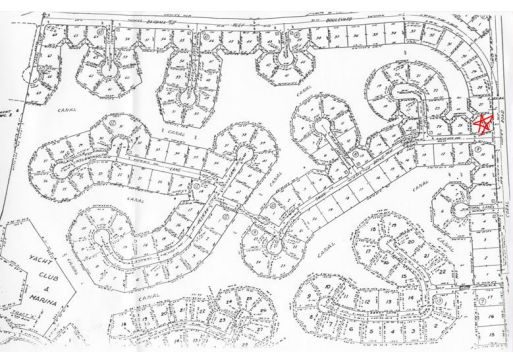
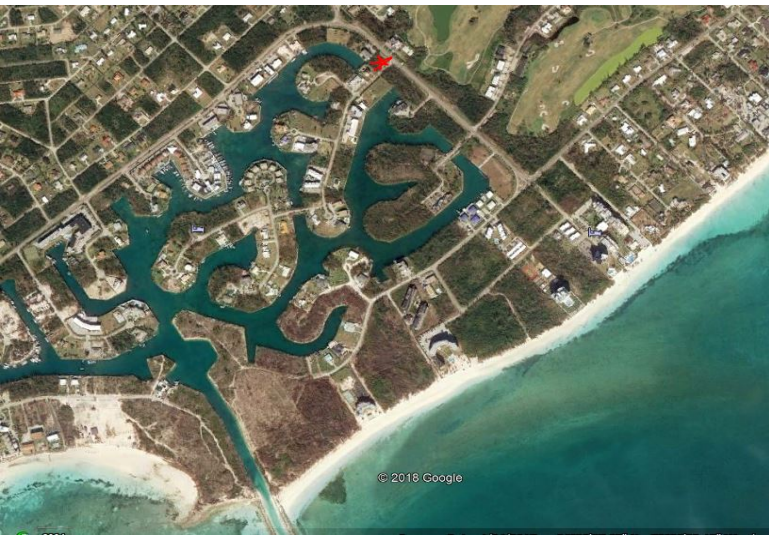


Waterfront Multi- Family Zoned Land in Desired Location!



PRICE REDUCTION!!!

This waterfront lot is in a desired location in walking distance to the beach. I

This waterfront lot is in a desired location in walking distance to the beach. It is a perfect site for condominium building or cottages with dockage....read more on our website.

Lot Size: 16000
Maint. Fees: -
Features: Canal Front
Great popular location
near golf course
can offer dockage



Ina Simmons

Phone: (242)351-9081
inasimmons@gmail.com



\$85,000 ID# 34583 View Online
www.sarlesrealty.com