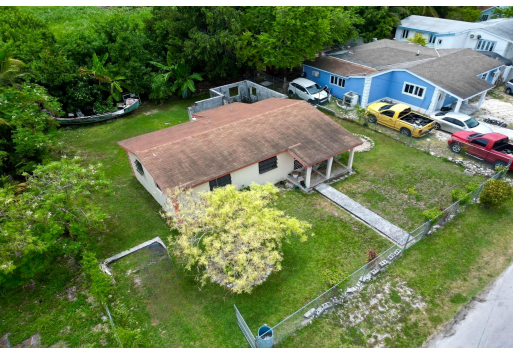


ANTIGUA STREET, Prince Charles Drive, New Providence/Paradise



Welcome to House #60, Lot #1 on Antigua Street in the Elizabeth Estates Subdivision. This...

Welcome to House #60, Lot #1 on Antigua Street in the Elizabeth Estates Subdivision. This single-family home offers a unique opportunity for those seeking a fixer-upper with great potential. Situated in a family-oriented community, this property is ideal for those looking to establish roots in a well-developed residential area surrounded by schools, grocery stores, nearby parks, clinics, and an overall vibrant community lifestyle. The home features 3 bedrooms and 1 bathroom, providing a comfortable living space of 840 interior sq.ft on a 5,000 sq.ft lot which offers a substantial yard space for outdoor activities. Whether utilized for gardening, entertaining or developing future enhancements, it creates a canvas for flexibility. With nearby recreational options, this property is perfect fo...read more on our website.

- Bedrooms: 3
- Bathrooms: 1
- Lot Size: 5000
- Subdivision: Prince Charles Drive
- Features: Adult Oriented, Easy Access, Family Oriented, Fully Fenced, Garden Area, Highway Access, Kitchen Built-in(s), Level Lot, Low Maint Yard, Main Level Entry, Recreation Nearby, Road - Paved, Seniors Oriented, Shopping Nearby

60 ANTIGUA STREET, Prince Charles Drive, New Providence/Paradise Island
Phone:



\$210,000 ID# M63562 [View Online](#)
www.sarlesrealty.com