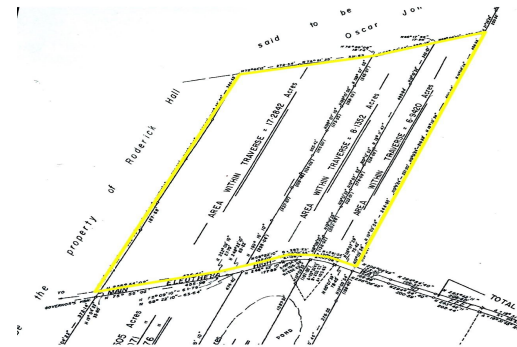


# GOVERNOR'S HARBOUR, Governor's Harbour, Eleuthera



## Situated one mile south of Governor's Harbour on the east side of the King's Highway this 32.35...

Situated one mile south of Governor's Harbour on the east side of the King's Highway this 32.35 tract has elevations up to 100 feet. Property is ideally situated for land development with spectacular sea views and elevations. All utilities are on the Highway. There is an adjacent 72.54 acre tract to the south for sale. Eleuthera is situated approximately 50 miles east of Nassau at its nearest point. It was settled in 1648 by the Eleutheran Adventurers - a band of English Puritans who left Bermuda in search of religious freedom. They named the island Eleuthera, which means Freedom (Eleftheria in Greek). The Adventurers founded what was probably the first democracy in the western world. Eleuthera is over 100 miles long and has lots of gorgeous pink and white sandy beaches, mainly on th...read more on our website.

Bedrooms: 0  
Bathrooms: 0  
Lot Size: 1409166  
Subdivision: Governor's Harbour  
Features: Acreage, Highway Access, None, Road - Paved, Shopping Nearby, View - Ocean, Wooded Area

GOVERNOR'S HARBOUR, Governor's Harbour, Eleuthera  
Phone:



**\$1.450,000 ID# M61086** [View Online](#)  
[www.sarlesrealty.com](http://www.sarlesrealty.com)