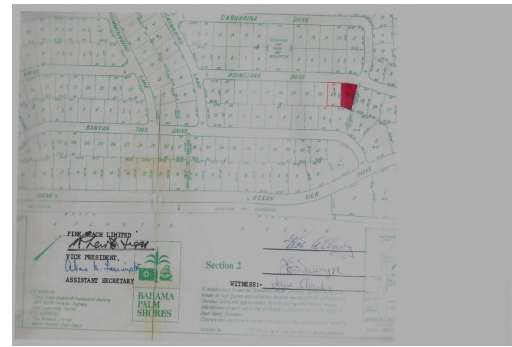
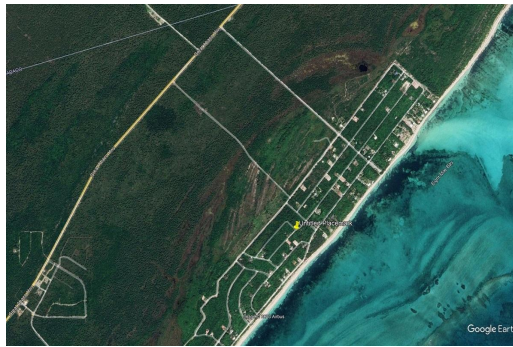


LOT#23 BEACH ACCESS, Bahama Palm Shores, Abaco



This Bahama Palm Shores lot offers beach access to a eight mile long beach where one can walk down...

This Bahama Palm Shores lot offers beach access to a eight mile long beach where one can walk down to the beach to take your beautiful sunset pictures every evening or enjoy a relaxing walk on the beach. Electricity is nearby. Bahama Palm Shores is only a thirty minute drive from all the amenities of Marsh Harbour. Bahama Palm Shores has their very own Fire Department....read more on our website.

Bedrooms: 0

Bathrooms: 0

Lot Size: 10625

Subdivision: Bahama Palm Shores

LOT#23 BEACH ACCESS,
Bahama Palm Shores, Abaco

Phone:

Features: Family Oriented,
Level Lot, None, Pets
Allowed, Quiet Area



\$30,000 ID# M54349 [View Online](#)
www.sarlesrealty.com