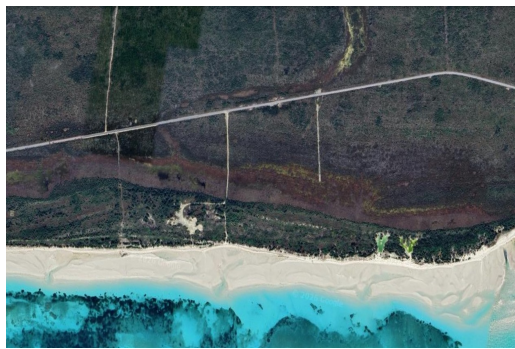
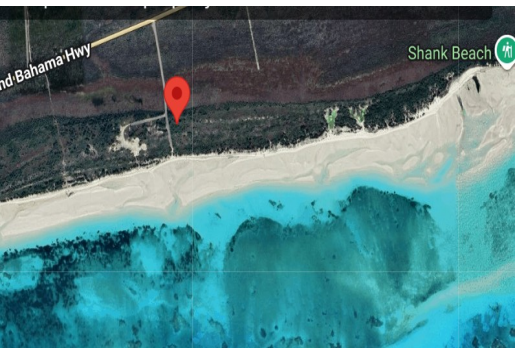


12 Mount Pleasant



Located in the peaceful and up-and-coming community of Mount Pleasant, this 12,000 sq. ft. parcel...

Living Area: 12,102
Features: Acreage



Ina Simmons

Phone: 242-727-0707
inasimmons@gmail.com

Located in the peaceful and up-and-coming community of Mount Pleasant, this 12,000 sq. ft. parcel offers an excellent opportunity to own property just steps from one of the island's most stunning coastlines. Only four lots (approximately 300 feet) from the ocean, you'll enjoy easy access to a beautiful, uncrowded beach that stretches for miles along the east side of Grand Bahama Island. This property is ideal for: * A private island retreat * Vacation rental development * Long-term investment in a growing area The location offers tranquility, natural b...read more on our website.



\$100,000 ID# 1070522 [View Online](#)
www.sarlesrealty.com