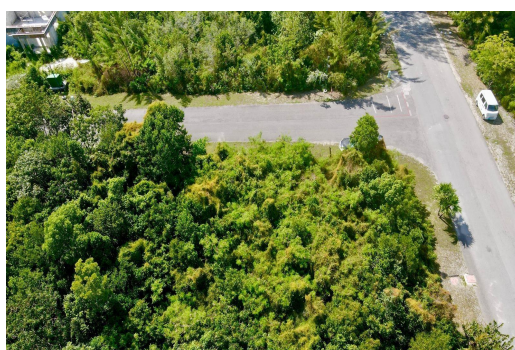


SOUTH SEAS SUBDIVISION, Bacardi Road, New Providence/Paradise Island



Discover a prime opportunity to own a 9,223 sq. ft. lot located in the highly sought-after South...

Discover a prime opportunity to own a 9,223 sq. ft. lot located in the highly sought-after South Seas Subdivision. This spacious parcel is one of the largest corner lots in the entire subdivision that offers the perfect setting to build your dream home in a peaceful, well-established neighborhood at an unbeatable price. Enjoy the convenience of being close to modern amenities while still embracing the tranquility of suburban living. With its desirable location and strong demand in the area, this property is an excellent choice for homeowners and investors alike....read more on our website.

Bedrooms: 0
Bathrooms: 0
Lot Size: 9223
Subdivision: Bacardi Road
Features: None

SOUTH SEAS SUBDIVISION,
Bacardi Road, New
Providence/Paradise Island
Phone:



\$137.500 ID# M64509 [View Online](#)
www.sarlesrealty.com