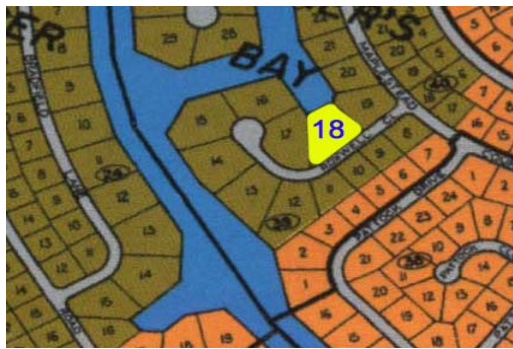
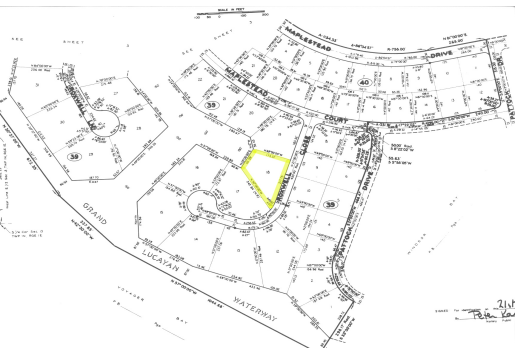
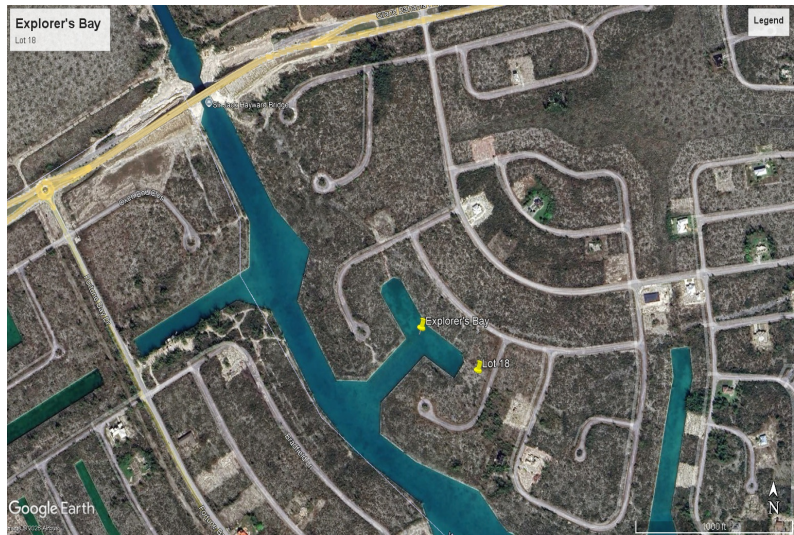
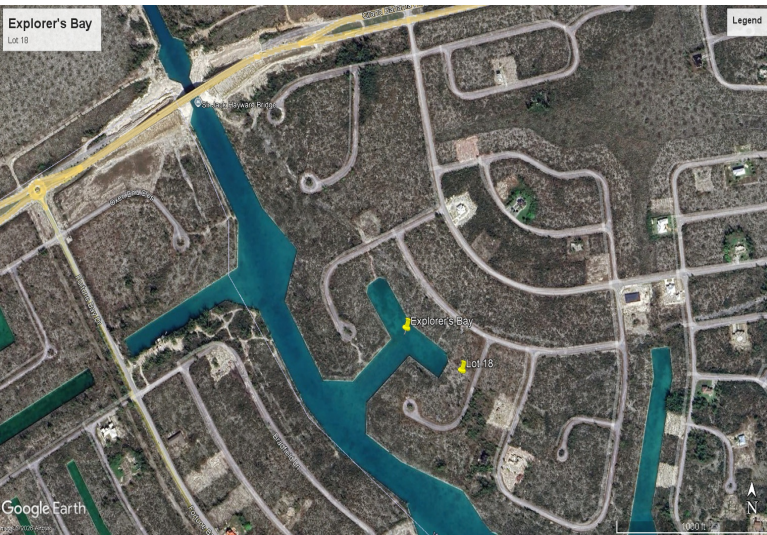


Explorer's Bay Waterfront Land



Vacant canal-front land located in the desirable Explorer's Bay Subdivision on Roxwell Close,...

Vacant canal-front land located in the desirable Explorer's Bay Subdivision on Roxwell Close, ideally positioned just off the Grand Lucayan Waterway. This expansive 35,283 sq. ft. (0.81-acre) parcel is zoned for high-rise multifamily development, making it an exceptional opportunity for investors and developers.

The property offers 110 feet of water frontage with direct ocean access, perfect for a marina-style development or luxury waterfront residences. Enjoy the convenience of protected waterways while being moments from open water, boating, and the best of Grand Bahama living.

Whether envisioned as upscale condominiums, apartments, or a mixed-use waterfront project, this rare...read more on our website.

Lot Size: 0.81
Living Area: 35,283
Subdivision: Explorer's Bay
Features: Canal Front, Quiet Area



James Sarles

Phone: (242) 727-8888

jamesarlesrealty@gmail.com



\$125,000 ID# 1070445 [View Online](#)
www.sarlesrealty.com