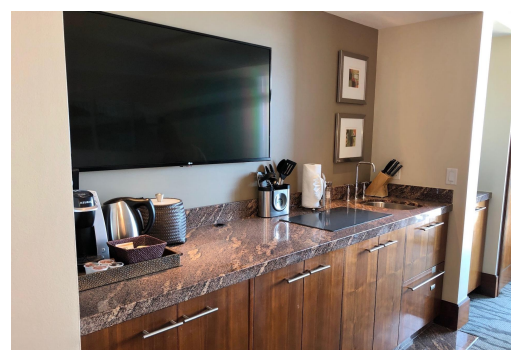
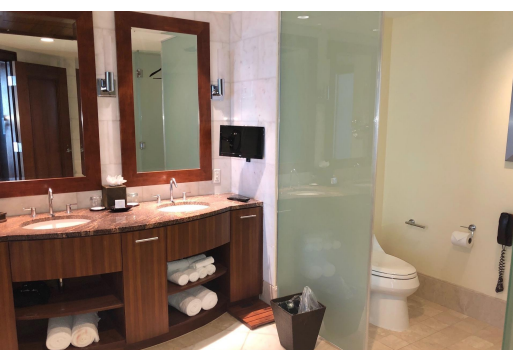


CASINO DRIVE, Paradise Island, New Providence/Paradise Island



Located on the 4th floor of The Reef at Atlantis, with a beautiful resort view, this furnished...

Located on the 4th floor of The Reef at Atlantis, with a beautiful resort view, this furnished studio offers an open living/sleeping area with a pull-out sofa, a well-appointed kitchenette, and a private balcony. Owners may participate in the hotel rental pool for professionally managed, hassle-free income and can enjoy up to 90 days of personal use per year. This condo benefits from the Bahamas Hotels Encouragement Act incentives, including no annual property tax under the program (buyer to verify). Ownership includes full access to Atlantis amenities: multiple pools, fitness center, white-sand beach with loungers, fine dining, Aquaventure waterpark, and the Atlantis Casino. A turnkey option for island living with established rental demand....read more on our website.

Bedrooms: 1

Bathrooms: 1

Lot Size: 525

Subdivision: Paradise Island

CASINO DRIVE, Paradise Island,
New Providence/Paradise Island
Phone:

Features: Beach Front,
Can Be Rented, Family
Oriented, Furnished, Golf
Course Nearby, Jetted
Bathtub, Main Level
Entry, Marina Nearby,
Night Security, Short
Term Allowed, Swimming
Pool



\$430.000 ID# M63858 [View Online](#)
www.sarlesrealty.com