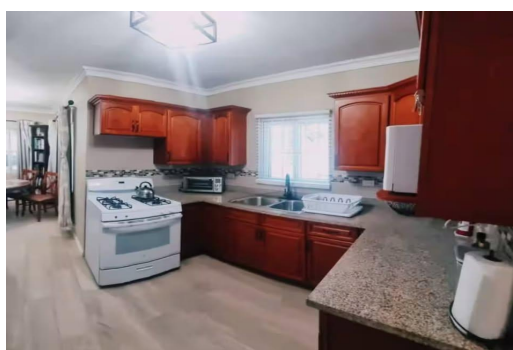


WAREEN’S CLOSE, Sea Breeze, New Providence/Paradise



Available September 15th This spacious 3-bedroom, 2.5-bathroom home offers turnkey convenience in...

Available September 15th This spacious 3-bedroom, 2.5-bathroom home offers turnkey convenience in one of Nassau's most desirable residential communities. Fully enclosed and fully furnished, the property features modern finishes throughout and is move-in ready. Enjoy a large private yard, dual driveways, and electronic gate access for added privacy and ease. The interior includes a well-appointed kitchen and comfortable living spaces, complemented by a private patio for outdoor relaxation. Key Features: - 3 bedrooms - 2.5 bathrooms - Fully furnished - Turnkey appliances: fridge, stove, washer, dryer - Dual ductless A/C units - Private patio - Spacious enclosed yard - Dual driveway - Electronic gate access - \$3,200/month...read more on our website.

Bedrooms: 3

Bathrooms: 2

Lot Size: 6000

Subdivision: Sea Breeze

Features: Can Be Rented,

Easy Access, Family

Oriented, Fully Fenced,

Furnished, Garden Area,

Highway Access, Impact

Windows, Kitchen

Built-in(s), No Pets, No

Thru Road, Quiet Area,

Recreation Nearby,

Security System,

Shopping Nearby

WAREEN’S CLOSE, Sea

Breeze, New

Providence/Paradise Island

Phone:



\$3.200 ID# M63834 View Online
www.sarlesrealty.com