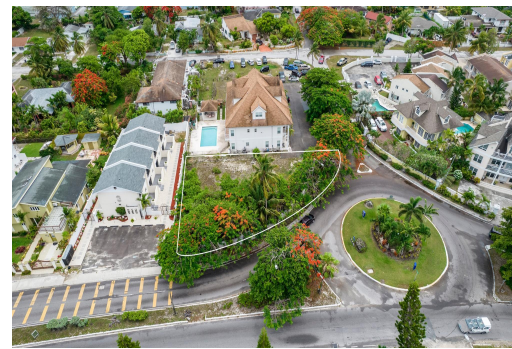
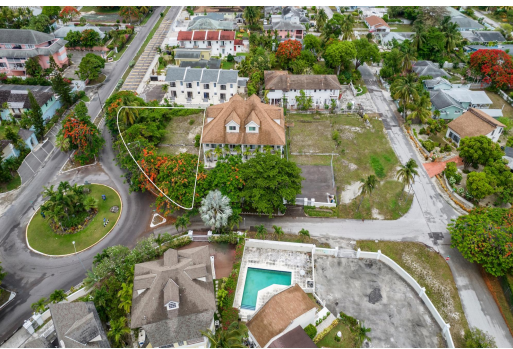


WESTWARD VILLAS, W BAY ST, West Bay Street, New Providence/Paradise Island



Discover a rare investment opportunity with these prime multi-family lots, perfectly positioned on...

Discover a rare investment opportunity with these prime multi-family lots, perfectly positioned on each side of the existing 4 Unit complex in a highly sought-after neighborhood. Ideally suited for the booming short-term rental market, this location offers exceptional appeal with its close proximity to beaches, public transportation, and vibrant local attractionsâ€”making it a top choice for Airbnb guests and long-term tenants alike. Envision six additional upscale units on each side of the existing complex to meet the growing demand for flexible living and travel accommodations. With infrastructure in place and strong rental potential, these lots are ready for a developer with vision to capitalize on one of the most promising real estate sectors. Donâ€™t miss your chance to build in a hig...read more on our website.

Bedrooms: 0

Bathrooms: 0

Lot Size: 41790

Subdivision: West Bay
Street

Features: Level Lot, None

WESTWARD VILLAS, W BAY
ST, West Bay Street, New
Providence/Paradise Island
Phone:



\$1.050,000 ID# M63175 [View Online](#)
www.sarlesrealty.com