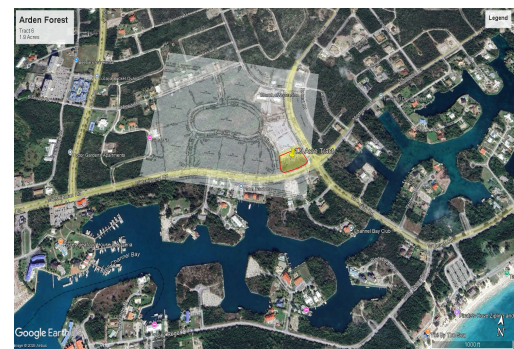
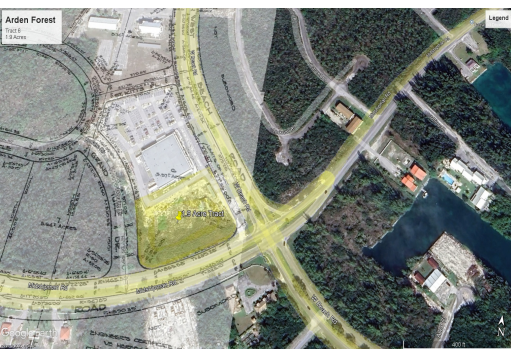
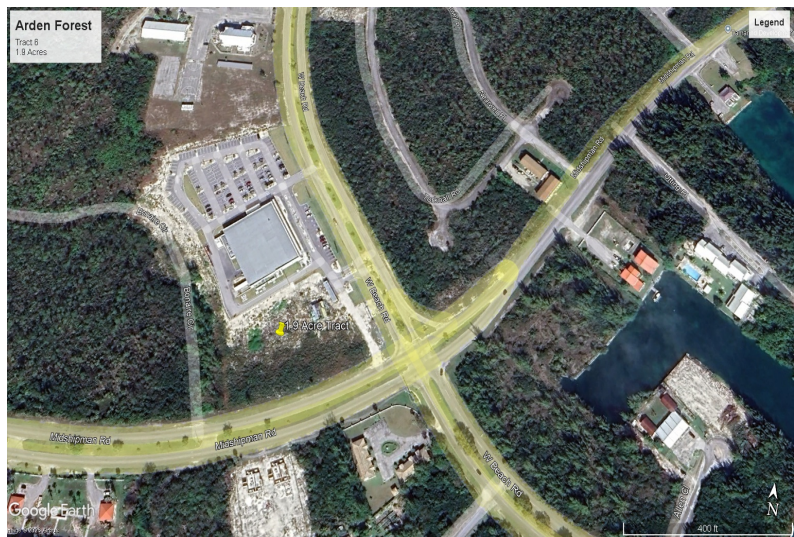
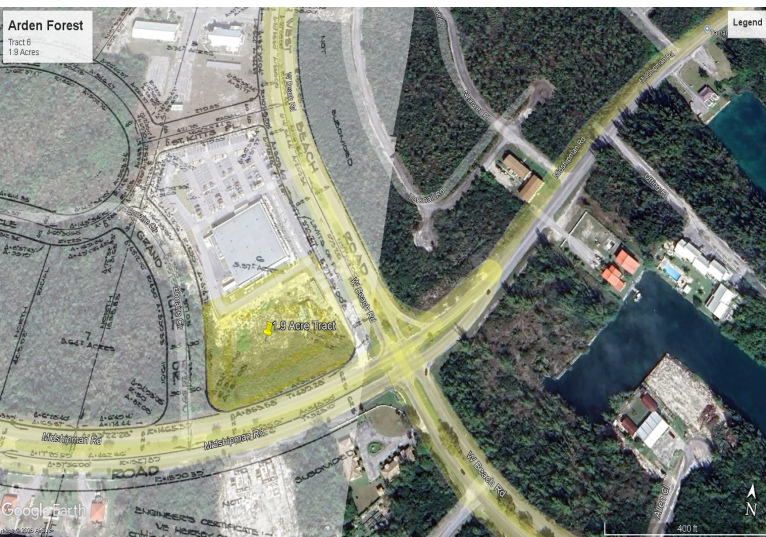


Commercial Land for Sale “ Arden Forest



Prime 1.9-acre commercial parcel located in the highly visible Arden Forest area at the corner of...

Prime 1.9-acre commercial parcel located in the highly visible Arden Forest area at the corner of Midshipman Road and West Beach Road. This property offers direct highway access, making it ideal for retail, mixed-use, or other commercial development. Strategically positioned adjacent to the former Sawyers Super Center, the site benefits from strong traffic flow and excellent exposure. With commercial zoning already in place, this property presents an outstanding opportunity for investors or developers seeking a well-located parcel in a growing area.

Key Features:

- 1.9 acres of commercially zoned land
- Prime location at Midshipman & West Beach Road
- Direct highway access
- Adjacent to the former Sawyers Super Center

Lot Size: 1.9
Living Area: 82,764
Subdivision: Arden Forest
Features: Acreage,
Central location



James Sarles

Phone: (242) 727-8888

jamesarlesrealty@gmail.com



\$1,700,000 ID# 1070431 [View Online](#)
www.sarlesrealty.com