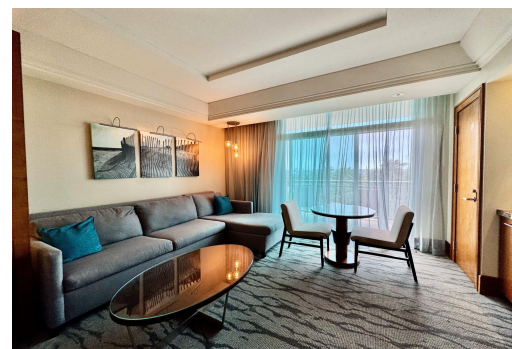
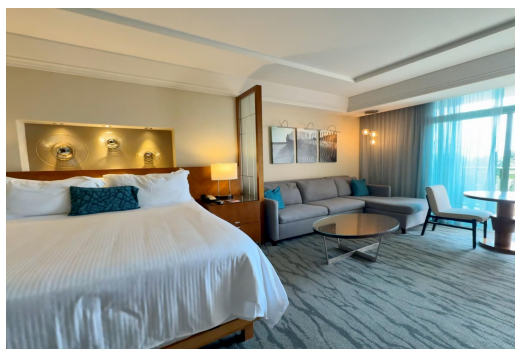


# REEF AT ATLANTIS, Paradise Island, New Providence/Paradise Island



**Situated on the 4th floor of The Reef, Atlantis, this property offers a spacious, open living area...**

Situated on the 4th floor of The Reef, Atlantis, this property offers a spacious, open living area with a pullout sofa, a small kitchen and a private balcony. Owners may place their condo in the hotel's rental pool to take full advantage of the Bahamian government's hotel encouragements Act inclusive of waiving the annual property tax. Generate income with hassle free management and enjoy up to 90-days per annum in your condo. Owners at The Reef have full access to all of Atlantis's amenities including fine dining options, multiple pools, gym, beach access with lounge chairs, a casino, waterpark and more....read more on our website.

Bedrooms: 1

Bathrooms: 1

Lot Size: 0

Subdivision: Paradise Island

REEF AT ATLANTIS, Paradise Island, New Providence/Paradise Island

Features: 24 Hour

Island

Phone:

Security, Adult Oriented, Beach Front, Can Be Rented, Easy Access, Family Oriented, Furnished, Golf Course Nearby, Hurricane Windows, Impact Windows, Kitchen Built-in(s), Landscaped, Marina Nearby, No Thru Road, Recreation Nearby, Road - Paved, Seniors Oriented, Shopping Nearby, Sprinkler System, Swimming Pool, Waterfront - Ocean, Wheelchair Access



**\$299,000 ID# M60823 [View Online](#)**  
**[www.sarlesrealty.com](http://www.sarlesrealty.com)**