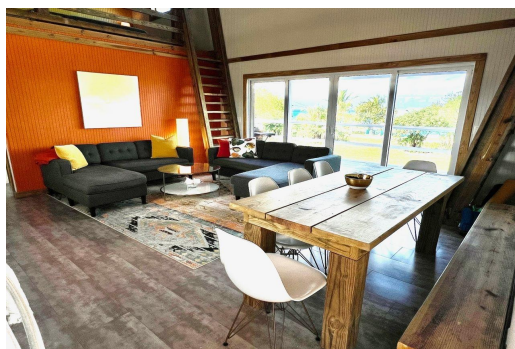


# PORT ROYAL SUBDIVISION, South Bimini, Bimini



**Accessible with ease, Permanent Vacation is a haven waiting to be explored. A quick 30-minute...**

Accessible with ease, Permanent Vacation is a haven waiting to be explored. A quick 30-minute seaplane journey from Miami or a slightly longer one from Fort Lauderdale transports you to this slice of paradise. Situated on a generous 75x100 sqft lot, Permanent Vacation stands as a fully furnished haven, boasting 2 bedrooms, 2 baths, and an additional 2 lofts to accommodate your every need. The interior of this charming abode spans 1200 sqft and is adorned with vibrant colors that infuse character into every corner. The house features modern amenities, including a stackable washer and dryer, a cozy dining area, and a welcoming living room. There is an expansive deck and patio area, where you can relish the cool Bimini evening breeze while unwinding from the day's adventures. The Permanent Va...read more on our website.

Bedrooms: 2  
Bathrooms: 2  
Lot Size: 7500  
Subdivision: South Bimini  
Features: Acreage, Additional Accom., Adult Oriented, Cable, Can Be Rented, Canal Front, Easy Access, Family Oriented, Furnished, Impact Windows, Main Level Entry, Marina Nearby, Phone to Lot, Quiet Area, Recreation Nearby, Recreational, Road - Gravel, Shopping Nearby, View - Ocean, Waterfront - Ocean

PORT ROYAL SUBDIVISION,  
South Bimini, Bimini  
Phone:



**\$499,000 ID# M61301 [View Online](#)**  
**[www.sarlesrealty.com](http://www.sarlesrealty.com)**