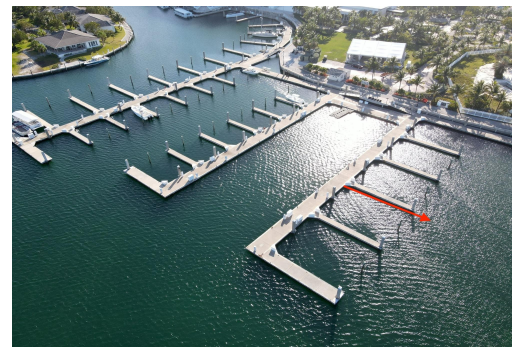


# BIMINI BAY DOCK SLIP, North Bimini, Bimini



**Located within the renowned Bimini Bay Mega Marina, this 50ft slip offers the perfect blend of...**

Located within the renowned Bimini Bay Mega Marina, this 50ft slip offers the perfect blend of convenience, security, and luxury. Just off the coast of Florida, the marina is an official port of entry into The Bahamas, complete with on-site Customs and Immigration for a smooth arrival experience. Positioned only steps away from Resorts World Casino, the Mega Yacht Pool, and the resort's premier dining options, this slip places you at the heart of Bimini's lifestyle and amenities. As an investment, marina slips in this community rent at an average of \$6.60 per ft. per day with a minimum charge of 40ft., making this an attractive option for both personal use and income potential. Monthly dues for Abaco 7 are \$538.82, which include access to marina services, amenities, and security, ensuri...read more on our website.

Bedrooms: 0  
Bathrooms: 0  
Lot Size: 50  
Subdivision: North Bimini  
Features: 24 Hour  
Security, Adult Oriented,  
Can Be Rented, Central  
location, Dock, Easy  
Access, Family Oriented,  
Gated Community, Marina  
Nearby, Night Security,  
Phone to Lot, Quiet Area,  
Recreation Nearby,  
Recreational, Road -  
Gravel, Seniors Oriented,  
Shopping Nearby

BIMINI BAY DOCK SLIP, North  
Bimini, Bimini  
Phone:



**\$160.000 ID# M64130 [View Online](#)**  
**[www.sarlesrealty.com](http://www.sarlesrealty.com)**