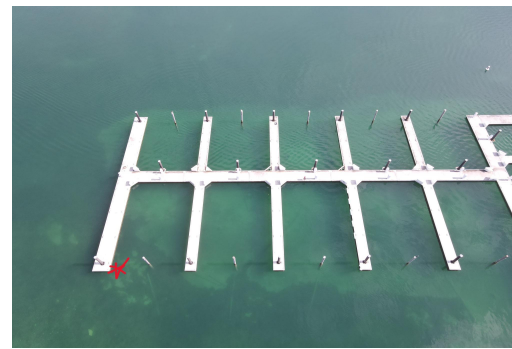
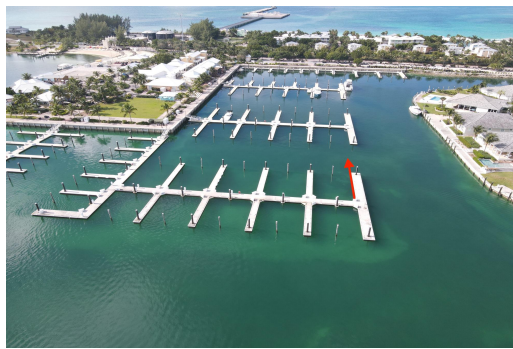


BIMINI BAY FISHERMANS VIL, North Bimini, Bimini



Welcome to Dolphin Slip #19, a 60-foot inside dock slip nestled within the secure and peaceful...

Welcome to Dolphin Slip #19, a 60-foot inside dock slip nestled within the secure and peaceful Bimini Bay Fisherman's Village Marina. Fisherman's Village Marina serves as an official port of entry to The Bahamas, with on-site Customs and Immigration services to ensure a smooth and efficient arrival process. This floating dock provides quiet, secure dockage just steps from the vibrant heart of the resort, giving you convenient access to luxury amenities including the lagoon-style pool, world-class casino, and acclaimed resort dining. Whether you're docking for a few hours, overnight, or an entire season. From an investment standpoint, marina slips rent for approximately \$3.75 per foot per day (minimum 30 ft.), making Dolphin #19 not only a secure harbor for your vessel but also a valu...read more on our website.

Bedrooms: 0

Bathrooms: 0

Lot Size: 60

Subdivision: North Bimini

Features: Adult Oriented,

Can Be Rented, Canal

Front, Dock, Easy

Access, Family Oriented,

Marina Nearby, View -

Ocean

BIMINI BAY FISHERMANS VIL,

North Bimini, Bimini

Phone:



\$110.000 ID# M63069 View Online
www.sarlesrealty.com