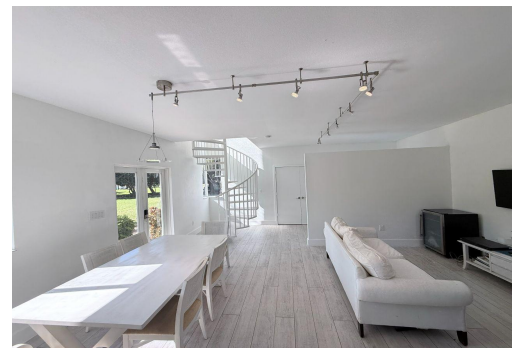
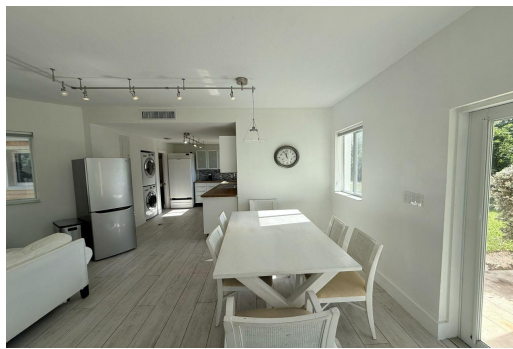


# BIMINI BAY TREEHOUSE, North Bimini, Bimini



**Welcome to your island retreat in the heart of Bimini Bay – a beautifully upgraded Treehouse...**

Welcome to your island retreat in the heart of Bimini Bay – a beautifully upgraded Treehouse model originally designed as a one-bedroom and thoughtfully converted into a spacious two-bedroom home. Perfectly positioned near the marina, this residence offers serene balcony views from both bedrooms, capturing the peaceful rhythms of life by the water. Located at the end of the community and right beside the park, the home enjoys an expansive green space that provides a rare sense of privacy and tranquility. It's one of the most peaceful and calming areas in Bimini Bay, ideal for those seeking a quiet island lifestyle surrounded by nature. Being in Phase One, the property is close to everything – just a short stroll to the beach, community pool, and the marina. Whether you're enjoying a...read more on our website.

Bedrooms: 2

Bathrooms: 2

Lot Size: 0

Subdivision: North Bimini

Features: 24 Hour

Security, Adult Oriented,

Can Be Rented, Family

Oriented, Furnished,

Gated Community,

Landscaped, Level Lot,

Low Maint Yard, Main

Level Entry, Marina

Nearby, Night Security,

Quiet Area, Recreation

Nearby, Road - Paved,

Shopping Nearby,

Swimming Pool

BIMINI BAY TREEHOUSE, North

Bimini, Bimini

Phone:



**\$305.000 ID# M64942 [View Online](#)**  
**[www.sarlesrealty.com](http://www.sarlesrealty.com)**