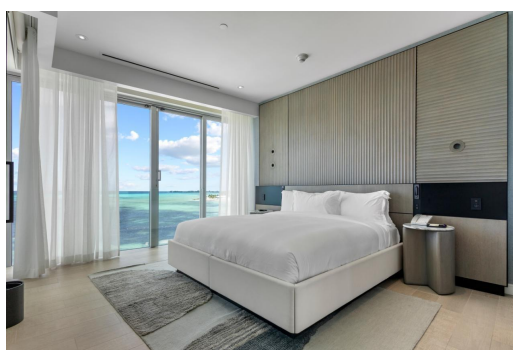


# GOLDWYNN, West Bay Street, New Providence/Paradise Island



## Goldwynn resort features a soft and modern design that blends with the shoreline just steps away...

Goldwynn resort features a soft and modern design that blends with the shoreline just steps away from the water. This stunning 2-bed suite is located on the hotel side of the complex. The residence offers almost 1400 sq ft of living space with 1213 sq ft for the main unit plus an additional 712 sq ft for the balcony alone. The full kitchen has high-end appliances, cabinets and countertops. Both bedrooms have ensuite bathrooms with premium fixtures and amenities. The residence features a lock off option allowing you to either enjoy the entire space or close off one side for yourself while you rent out the other. The best part of this suite is the private balcony that gives you amazing views of the ocean and the island. The suite also has custom blackout drapes, individual air-conditioning...read more on our website.

Bedrooms: 2  
Bathrooms: 2  
Lot Size: 1925  
Subdivision: West Bay Street  
Features: 24 Hour Security, Beach Front, Cable, Furnished, Hurricane Windows, Impact Windows, Stand-by Generator, Swimming Pool, View - Ocean

GOLDWYNN, West Bay Street,  
New Providence/Paradise Island  
Phone:



**\$2.095,000 ID# M64546** [View Online](#)  
[www.sarlesrealty.com](http://www.sarlesrealty.com)