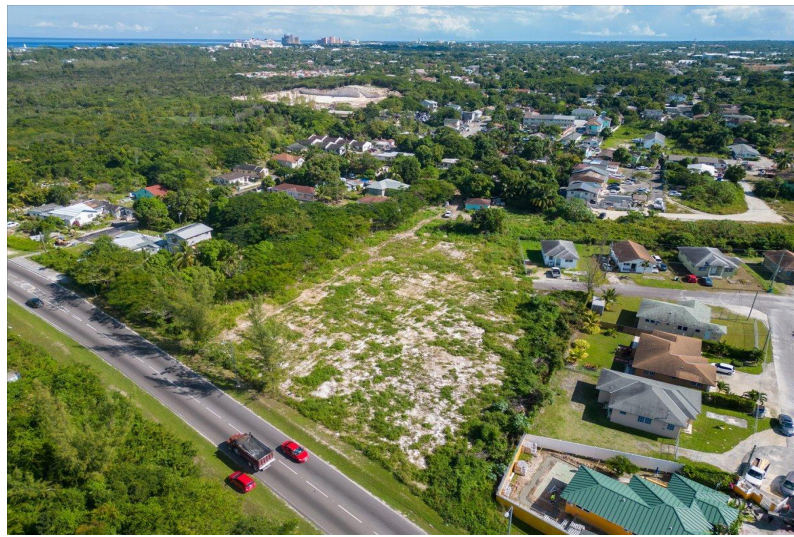
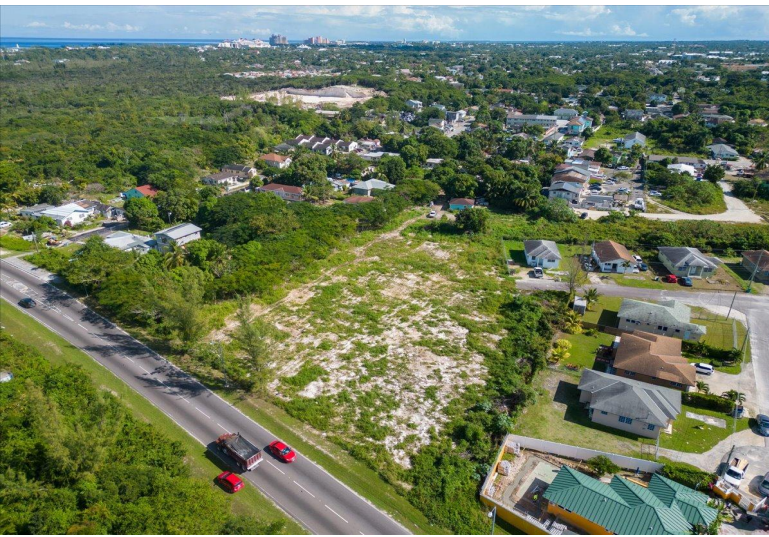


# LAPILLI ROAD, Chippingham, New Providence/Paradise Island



## Multi-family lot investment opportunity with great highway access from Saunders beach roundabout or...

Multi-family lot investment opportunity with great highway access from Saunders beach roundabout or Thompson Boulevard and JFK. This lot offers quick access to amenities from a quiet residential area. Suitable for an apartment complex, fourplex, triplex, or duplex. Can be purchased 1 lot or up to 3 lots "all next to each other" (please refer to the plot plan and approximate boundary outline). Please ensure you are pre-qualified if you plan to finance. If you require assistance with your pre-qualification please ask....read more on our website.

Bedrooms: 0

Bathrooms: 0

Lot Size: 8143

Subdivision: Chippingham

Features: Cul-de-sac,

Easy Access, Golf Course

Nearby, Highway Access,

Level Lot, None, Quiet

Area, Recreation Nearby,

Sidewalk

LAPILLI ROAD, Chippingham,

New Providence/Paradise Island

Phone:



**\$129,000 ID# M51535** [View Online](#)  
[www.sarlesrealty.com](http://www.sarlesrealty.com)