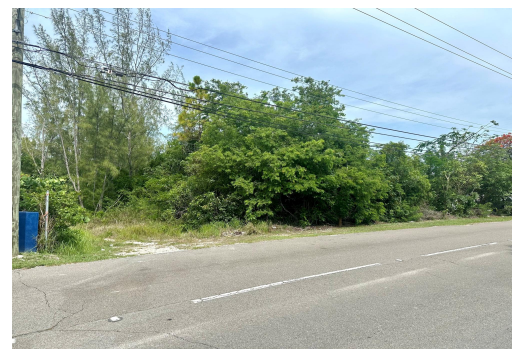
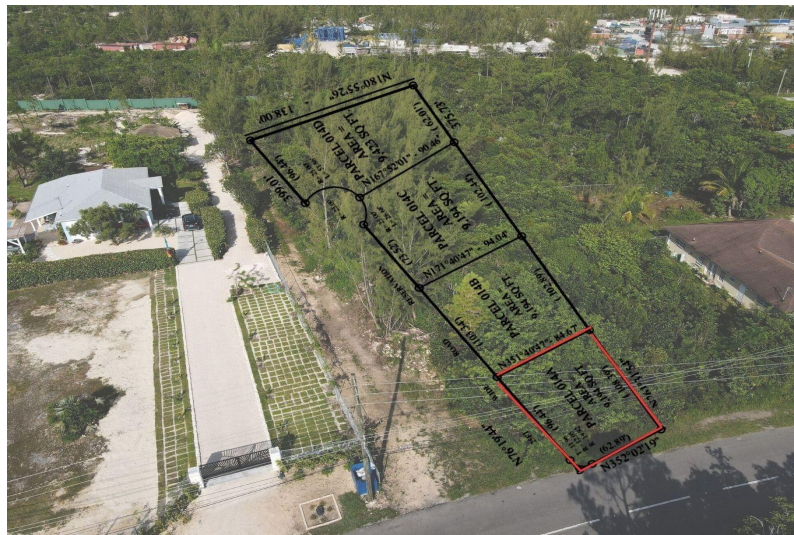


# OCEAN BOULEVARD, South Ocean, New Providence/Paradise Island



## This multi-family lot measures 9,149 sq. ft. and ideally located on South Ocean Boulevard, just...

This multi-family lot measures 9,149 sq. ft. and ideally located on South Ocean Boulevard, just steps from the prestigious Albany community. Whether you're looking to build a stylish triplex, modern townhouses, or charming cottages, this property offers the perfect canvas for your next income-generating project. With the South Ocean area rapidly developing into one of the most desirable addresses, now is the time to secure your stake in this growing market. don't miss your chance to build for the future. Contact today to make an offer or schedule a site visit, the owner is motivated to sell!...read more on our website.

Bedrooms: 0  
Bathrooms: 0  
Lot Size: 9194  
Subdivision: South Ocean  
Features: None

SOUTH OCEAN BOULEVARD,  
South Ocean, New  
Providence/Paradise Island  
Phone:



**\$230.000 ID# M63709** [View Online](#)  
[www.sarlesrealty.com](http://www.sarlesrealty.com)