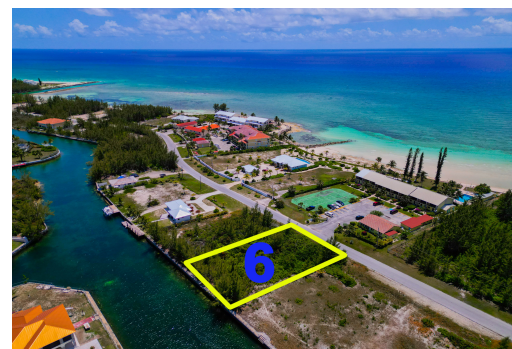
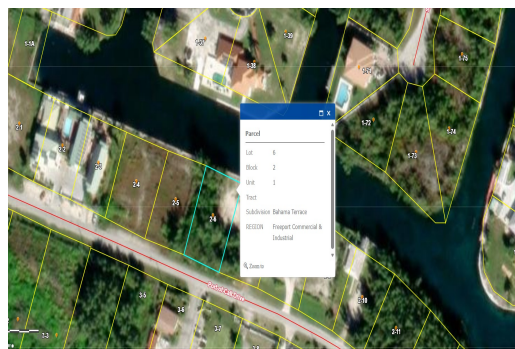


Port of Call Commercial Waterfront Land



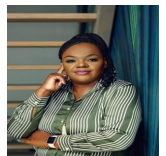
Spanning an impressive 15,000 square feet this generous lot provides ample space to bring your...

Spanning an impressive 15,000 square feet this generous lot provides ample space to bring your vision to life with a zoning designation of tourist commercial the possibilities are endless from luxurious resorts to charming bed and breakfasts this property holds the key to your entrepreneurial aspirations

The property's crown jewel is its 100 feet of captivating water frontage ensuring breathtaking views and direct access to the shimmering waters. Whether you envision building your private sanctuary or launching a thriving hospitality venture this vacant land serves as a blank canvas awaiting your artistic touch.

Discover the allure of Bahama Terrace Subdivision, a community renowned for its natural beauty, welcoming atmosphere, and proximity to the beach. Picture yourself basking in...read more on our website.

Lot Size: 0.34
Living Area: 15,000
Subdivision: Bahama Terrace Yacht & Country Club
Features: Canal Front, Dock, Road - Paved



Shelly Gardiner

Phone:

gardinershelly@gmail.com



\$206,000 ID# 1070414 [View Online](#)
www.sarlesrealty.com