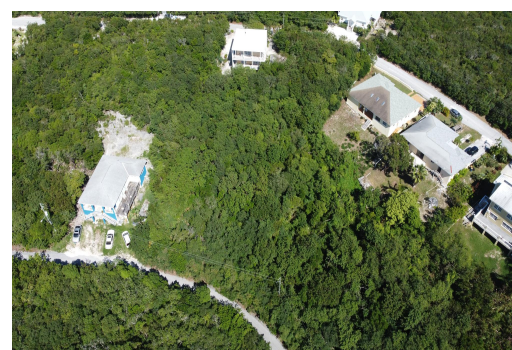
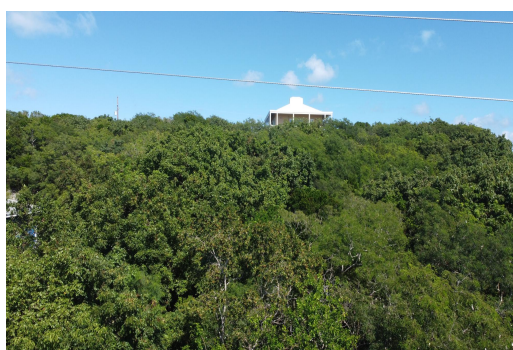
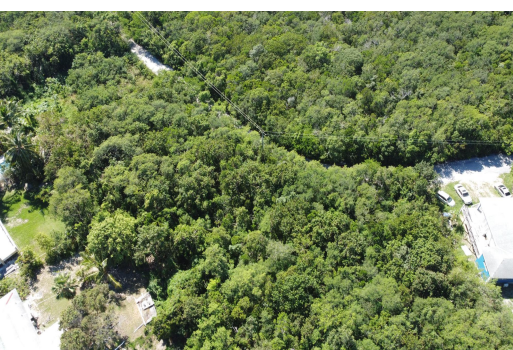


# BAHAMA SOUND 18 LOT#17205, Bahama Sound, Exuma &#038; Exuma Cays



## Vacant single-family lot located in Bahama Sound 18, a rapidly developing subdivision adjacent to...

Vacant single-family lot located in Bahama Sound 18, a rapidly developing subdivision adjacent to Jolly Hall and Hooper's Bay. Conveniently situated approximately 15 minutes from George Town and 20 minutes from Exuma International Airport, with grocery and hardware stores, liquor stores, a pharmacy, restaurants, and schools all within close proximity. Public beach access is within walking distance. Most utilities are available at the lot; water to be supplied via private well. An excellent opportunity to build in a desirable Exuma community. The neighboring lot (17204) is also available....read more on our website.

Bedrooms: 0  
Bathrooms: 0  
Lot Size: 10000  
Subdivision: Bahama Sound  
Features: None

BAHAMA SOUND 18  
LOT#17205, Bahama Sound,  
Exuma &#038; Exuma Cays  
Phone:



**\$40,000 ID# M65169** [View Online](#)  
[www.sarlesrealty.com](http://www.sarlesrealty.com)