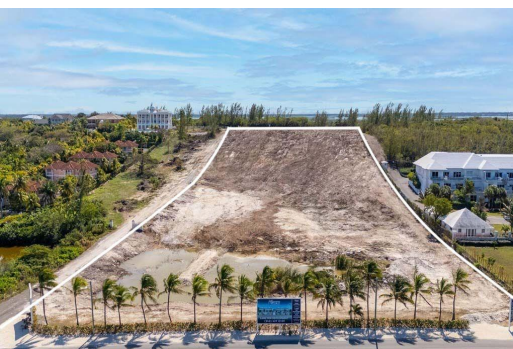


OCEANFRONT PARCEL, West Bay Street, New Providence/Paradise Island



Seize this once-in-a-lifetime chance to create a spectacular oceanfront community on 7.3 acres of...

Seize this once-in-a-lifetime chance to create a spectacular oceanfront community on 7.3 acres of prime oceanfront real estate. This exceptional property features approved plans for a 100-unit luxury condominium development, complete with world-class amenities designed to set a new benchmark for upscale living. The meticulously crafted architectural plans and rendering are available upon request and are included with the sale, providing a seamless foundation to bring your vision to life. Ideally located on prestigious West Bay Street, this coveted site offers unmatched convenience. It is just minutes from Lynden Pindling International Airport, the renowned Baha Mar resort, and an array of upscale shopping and dining options. Here, tranquility meets vibrant island living, offering the perfect...read more on our website.

Bedrooms: 0

Bathrooms: 0

Lot Size: 317988

Subdivision: West Bay Street

Features: Acreage, Easy Access, Highway Access, None, Recreation Nearby, Road - Paved, Shopping Nearby, View - Ocean, Waterfront - Ocean

OCEANFRONT PARCEL, West Bay Street, New Providence/Paradise Island
Phone:



\$11,500,000 ID# M61203 [View Online](#)
www.sarlesrealty.com