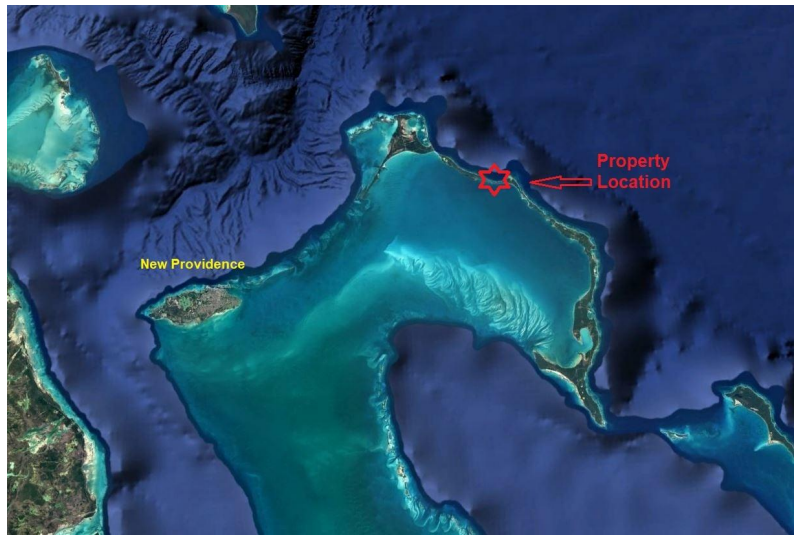
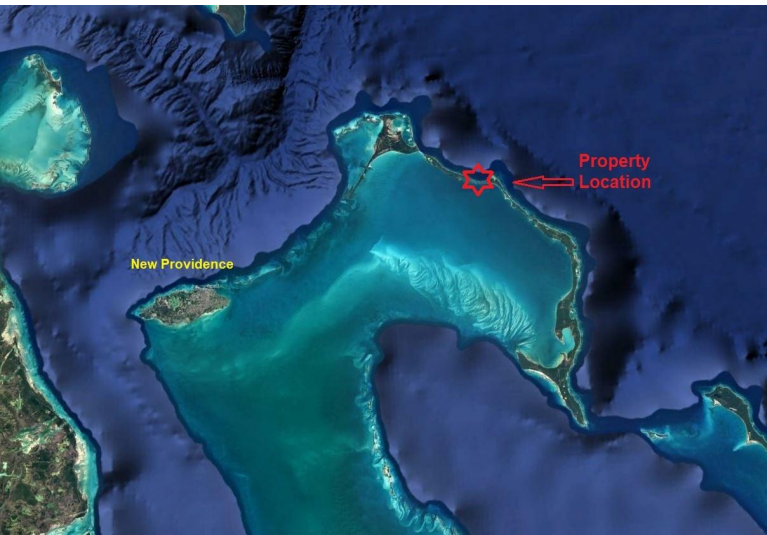


# Lot 36 HIDDEN BEACH DRIVE, Rainbow Bay, Eleuthera



**Located in the peaceful community of Rainbow Bay, this single-family 13,956 sq ft. lot is ideal for...**

Located in the peaceful community of Rainbow Bay, this single-family 13,956 sq ft. lot is ideal for your island home. Enjoy gentle elevations, cool breezes, and proximity to Rainbow Bay Beach and several other community beaches. Residents have access to a tennis court and park areas, with Governor's Harbour and Gregory Town just minutes away. A quiet, family-friendly neighborhood perfect for relaxed island living....read more on our website.

Bedrooms: 0  
Bathrooms: 0  
Lot Size: 13956  
Subdivision: Rainbow Bay  
Features: None

Lot 36 HIDDEN BEACH DRIVE,  
Rainbow Bay, Eleuthera  
Phone:



**\$70,000 ID# M64293** [View Online](#)  
[www.sarlesrealty.com](http://www.sarlesrealty.com)