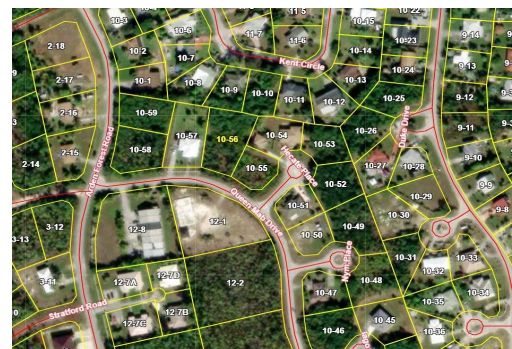
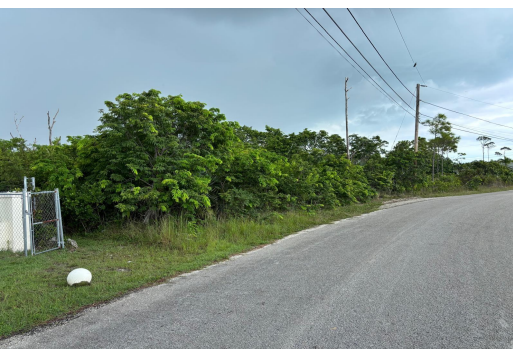


# 56 QUEEN MAB DRIVE, Arden Forest, Grand Bahama/Freepo



**Location: Arden Forest, Freeport, Grand Bahama Lot Size: 22,900 sq. ft. Zoning: Single-Family...**

Location: Arden Forest, Freeport, Grand Bahama Lot Size: 22,900 sq. ft.  
Zoning: Single-Family Residential Utilities: Nearby access to electricity, water, and telephone services Accessibility: Paved road access through Arden Forest subdivision Neighborhood: Established residential area within proximity to schools, shopping, and community services Potential Use: Suitable for the construction of a single-family residence...read more on our website.

Bedrooms: 0

Bathrooms: 0

Lot Size: 22900

Subdivision: Arden Forest

Features: None

56 QUEEN MAB DRIVE, Arden  
Forest, Grand Bahama/Freepo  
Phone:



**\$30,000 ID# M63962** [View Online](#)  
[www.sarlesrealty.com](http://www.sarlesrealty.com)