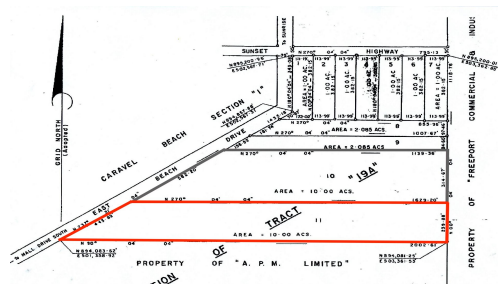
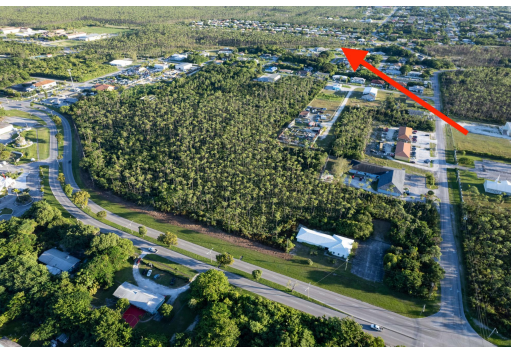
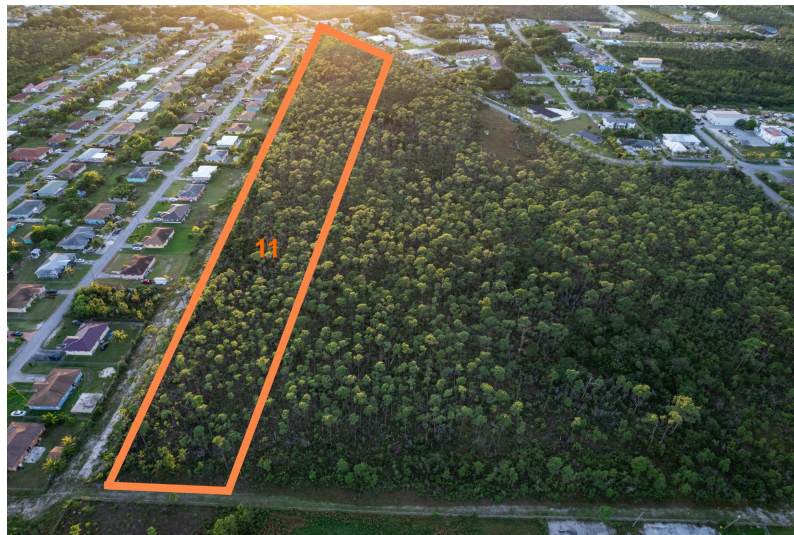
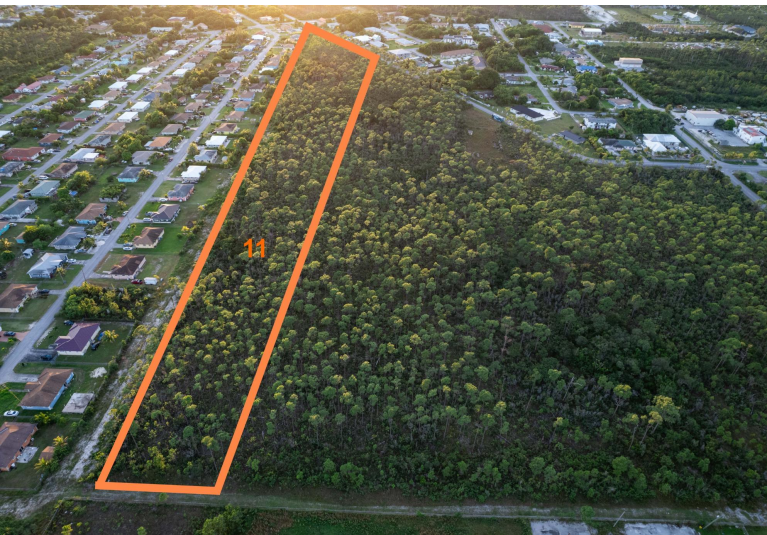


11 EAST BEACH DRIVE, Freeport, Grand Bahama/Freeport



This exceptional 10-acre parcel is ideally situated in the center of Freeport's thriving...

This exceptional 10-acre parcel is ideally situated in the center of Freeport's thriving residential and commercial district. Offering a rare opportunity for housing or mixed-use development, this property provides ample space and flexibility for visionary builders and investors. Conveniently located just minutes from schools, churches, shopping centers, and downtown Freeport business district, the tract also enjoys quick access to both Grand Bahama's domestic and international airports. With its combination of location, size, and accessibility, this property truly stands out as a one-of-a-kind investment opportunity in one of Freeport's most desirable areas....read more on our website.

Bedrooms: 0
Bathrooms: 0
Lot Size: 435600
Subdivision: Freeport
Features: None

11 EAST BEACH DRIVE,
Freeport, Grand
Bahama/Freeport
Phone:



\$475.000 ID# M64416 [View Online](#)
www.sarlesrealty.com

Ph: (242) 351-9081 | Web: www.sarlesrealty.com