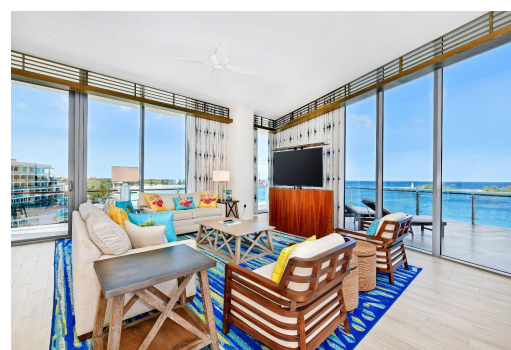
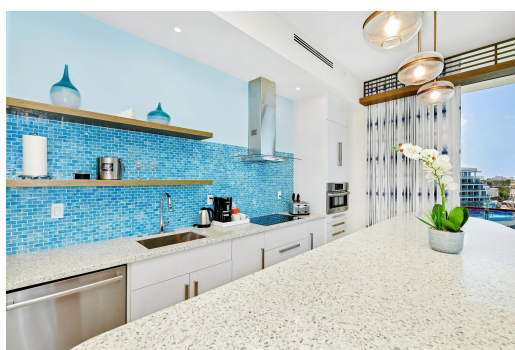
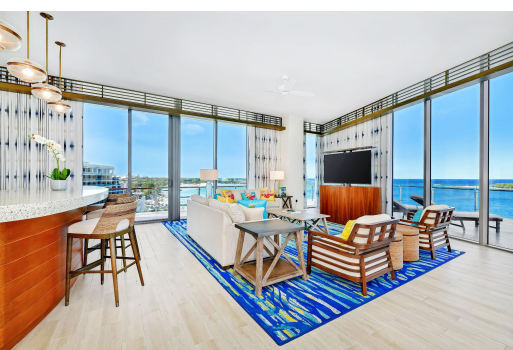
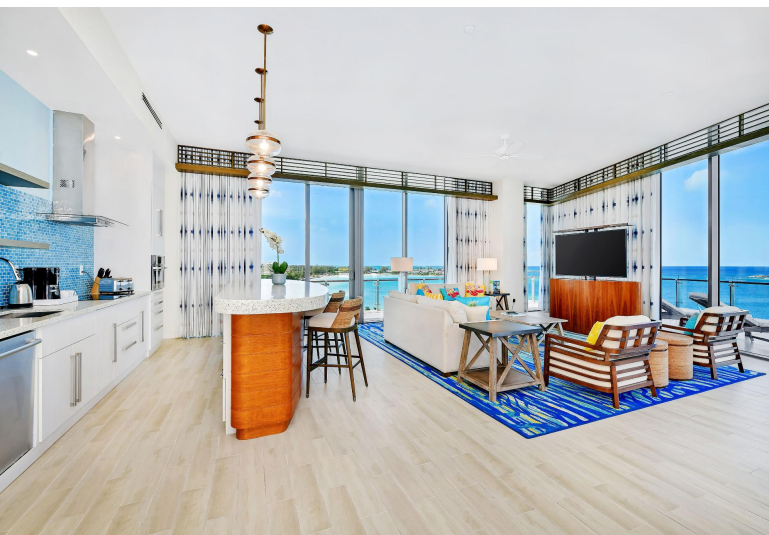


# RTICULAR HARBOUR, Downtown, New Providence/Paradise

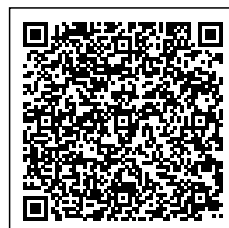


## **The Crown at One Particular Harbour Residences. Perched atop the prestigious One Particular Harbour...**

The Crown at One Particular Harbour Residences. Perched atop the prestigious One Particular Harbour Condo-Hotel Residences at The Pointe, this extraordinary 8th-floor Penthouse residence offers unmatched luxury, breathtaking views, and a truly elevated island lifestyle. This penthouse offers unrivaled privacy and panoramic water views. With 3,419 sq. ft. of impeccably designed interior space and an additional 1,610 sq. ft. of private balcony, this 4-bedroom, 4.5-bathroom residence showcases panoramic vistas of the Ocean, Paradise Island, Nassau Harbour, and the Cruise Port from every room through floor-to-ceiling glass and soaring 12-foot ceilings. Perfectly designed for both relaxation and entertainment, the penthouse features a private hot tub on the balcony, a pool table, and a private ...read more on our website.

Bedrooms: 4  
Bathrooms: 4  
Lot Size: 261360  
Subdivision: Downtown  
Features: 24 Hour Security, Beach Front, Cable, Can Be Rented, Family Oriented, Furnished, Harbour, Hot Tub, Impact Windows, Kitchen Built-in(s), Marina Nearby, Pets Allowed, Stand-by Generator, Swimming Pool, View - Ocean, Waterfront - Ocean

ONE PARTICULAR HARBOUR,  
Downtown, New  
Providence/Paradise Island  
Phone:



**\$5.998,000 ID# M63993** [View Online](#)  
**[www.sarlesrealty.com](http://www.sarlesrealty.com)**